



THE HASHEMITE KINGDOM OF JORDAN

**STUDIES IN THE HISTORY
AND ARCHAEOLOGY
OF JORDAN
XI**

A Stratified third Millennium BC Pottery Sequence from North-Central Jordan: The EBII - III Repertoire of Khirbat al-Batrāwī

1. Introduction: Stratigraphy of the Site

Excavation and restoration work carried out by Rome "La Sapienza" University at the site of Khirbat al-Batrāwī in north-central Jordan between 2005 and 2010 brought a significant portion of this untouched EB II - III fortified town to light, with a continuous sequence of structures and occupational layers from the beginning of the 3rd millennium BC to the final destruction of the town at the end of EB IIIB (Nigro 2009a, 2010a, 2010b; Nigro ed. 2006, 2008; 2012; Nigro and Sala 2009; 2010).

The coherent and uninterrupted stratigraphic sequence of this site, which was affected by successive episodes of destruction and reconstruction, preserves three main periods of occupation (respectively EB II, EB IIIA and EB IIIB; Nigro 2010a: 42-44) and many sealed contexts. This has allowed us to explore developments in the ceramic repertoire of this early urban community within the general framework of the north-central Jordanian pottery horizon, including sites as Khirbat az-Zayaqūn (Genz 2002), Pella (Bourke 2000), Tall Abū al-Kharaz (Fischer 2008), Tall al-Ḥandaqūq North (Mabry 1989), Tall as-Sa'idiyya (Tubb 1988: figs 32, 35, 38, 1998: 44), Tall al-Ḥandaqūq South (Chesson 2000) and the more recently excavated site of Tall Zar'ā (Vieweger *et al.* 2009).

The clearest and best-preserved stratigraphic sequence at the site was excavated on the north side of the town in Area B (see Nigro this volume: figs 1 - 2), both inside and outside the EB II - III main city-wall (Nigro 2007: 347-349, 352-353; Nigro ed. 2008: 7-8, 66-76, 127-147; 2012: 13-30, 145-167).

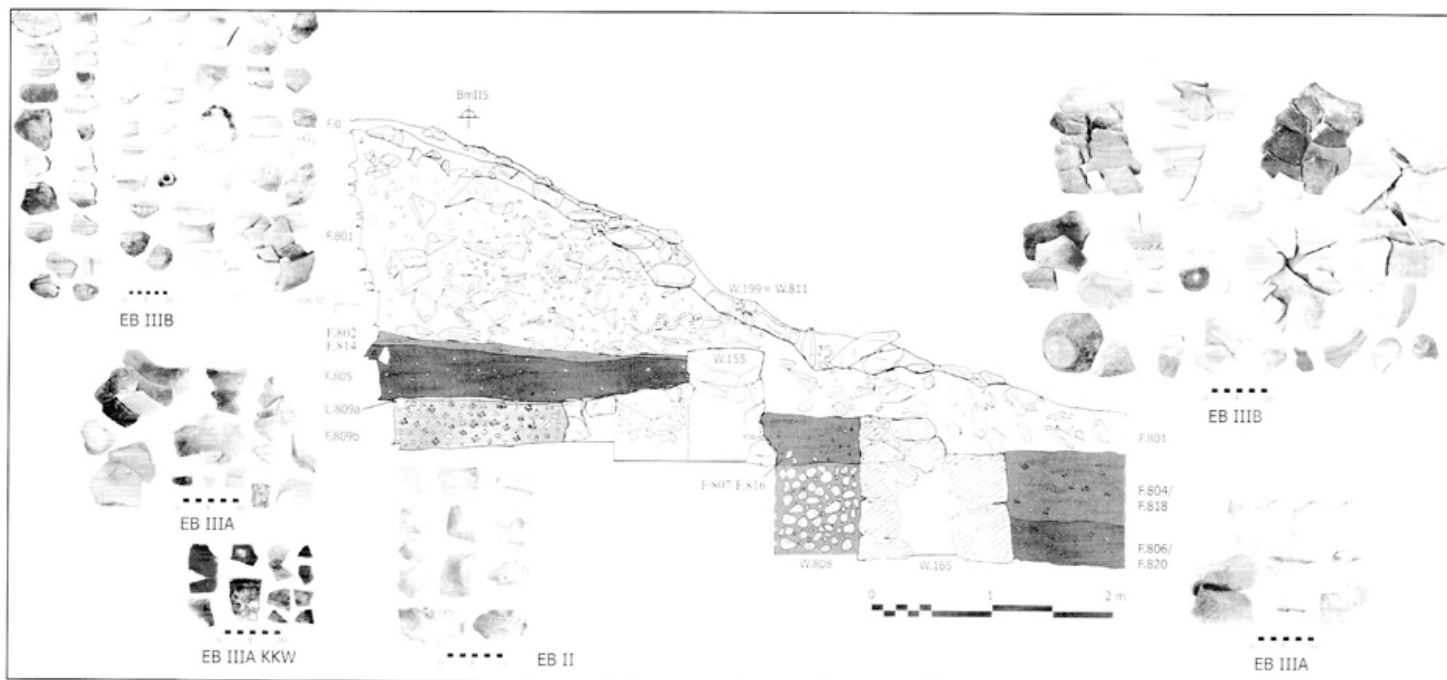
Three successive destruction layers (related to the destructions which afflicted the town at the end of EB II, EB IIIA and EB IIIB) were excavated outside the main city-wall and between it and the ad-

ditional lines of fortification (FIGS. 1 - 2): the town was destroyed three times during EB II - III and the fortifications underwent at least two major reconstructions, at the beginning of EB IIIA and EB IIIB (Nigro 2009a: 663-670, 2010a: 44-47, 2010b: 435-441; Nigro ed. 2008: 89-101).

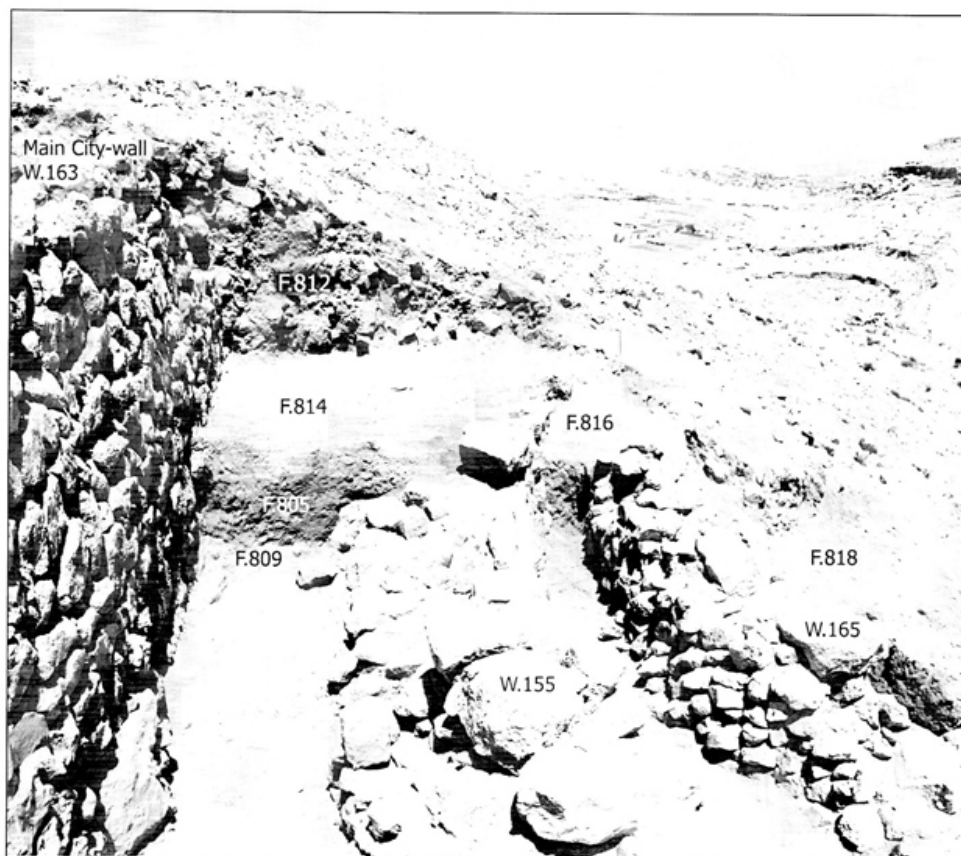
The same sequence was also identified inside the blocked EB II city-gate (FIG. 3; Nigro 2007: 349-350; Nigro ed. 2008: 75-76). Despite two major destructions at the end of EB II and EB IIIA in fact, the town achieved continuous growth during EB III, and strata accumulated against the blocked gate until the final destruction of the town at the end of EB IIIB.

The clear stratigraphy in Area B, as well as in other areas of the site (see below), allowed the three main chronological phases of the Early Bronze Age town to be tightly defined (TABLE 1): *viz.* EB II, EB IIIA and EB IIIB. These all yielded evidence for remarkable functional and typological development of the local pottery horizon. Particularly noteworthy is the clear distinction between the EB IIIA and EB IIIB pottery repertoires, which have been hard to separate on some sites, but are nonetheless well-defined on a number of stratified settlements including Jericho / Tall es-Sultan (Hennessy 1967: 6-25; Marchetti and Nigro eds 2000: 29-31, 41-42, 50-51 [Area F, EB IIIA], 132-133 [Area B, EB IIIB] - thanks to the recent stratigraphic re-assessment carried out by the Italian - Palestinian expedition -) and Khirbat Yarmouk (de Miroschedji 2000; de Miroschedji *et al.* 1988: 76-84).

The following article examines the ceramic repertoires of the three main phases at Batrāwī and summarises the main contexts of finds for each period: EB II, EB IIIA and EB IIIB. Ceramic material is presented in broad, functional classes: table / domestic ware, cooking ware, storage ware and



1. Western section of squares BnII5 + BnII4 outside the EB II-III Main City-Wall (W.163), with the three (EB II, EB IIIA and EB IIIB) superimposed layers of destructions (F.809, F.805, F.802/F.814) and related pottery materials.



2. Superimposed layers of destruction and collapse outside the EB II-III Main City-Wall (W.163), from east.

fine ware (i.e. simple painted ware), as well as for the main shapes with related fabrics, typological features, surface treatments and decoration. Specialised pottery productions relating to each period are listed afterwards.

In all three phases, plain ware vessels (i.e. table,

cooking and storage wares) represent around 80 % of the assemblage, which comes mainly from the domestic sphere or from possible public storage units. However, the frequency of specialised production changes from one period to another (TABLE 2; FIG. 4).



3. EB II-IIIa superimposed layers of destruction and use inside city-gate L.160, from north.

2. EB II Pottery Repertoire

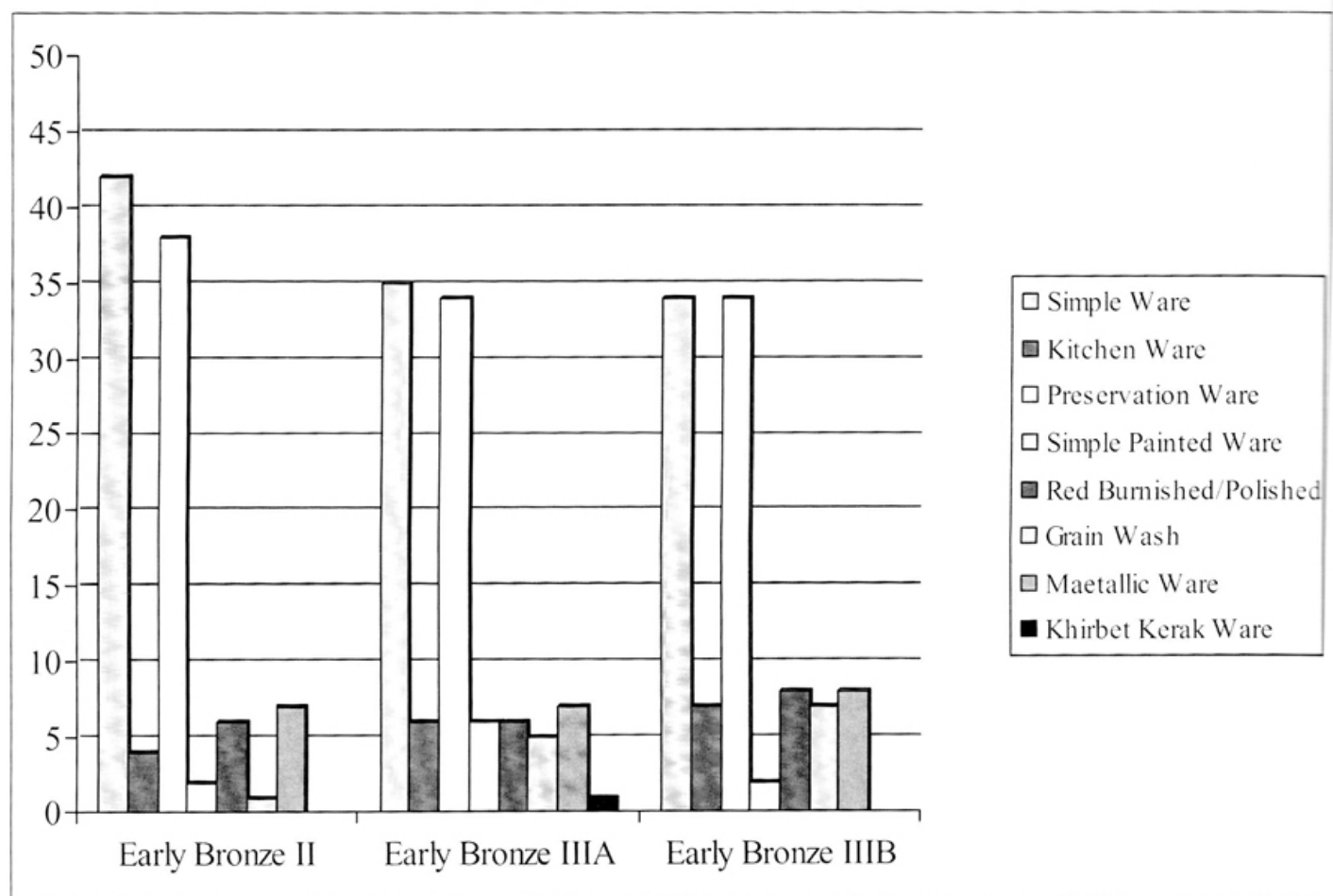
To date, EB II layers have been reached in two areas of the site: Areas E and B. Area E is located on the southern side of the site, where a sounding opened in the middle of the southern fortification line reached the earliest occupational layers, which lay directly over bedrock and dated back to EB II (phase 4; Nigro 2007: 357-358; Nigro ed. 2008: 245-255). EB II layers consisted of a thick stratum of collapse, represented by compacted charcoal, ash and crushed greyish mud-bricks. The latter had tumbled down from the EB II city-wall superstructure as a result of the violent earthquake which brought the EB II town to a sudden end (Nigro 2009a: 666-667, 2010b: 437). Similar EB II layers were reached in Area B North, outside the main

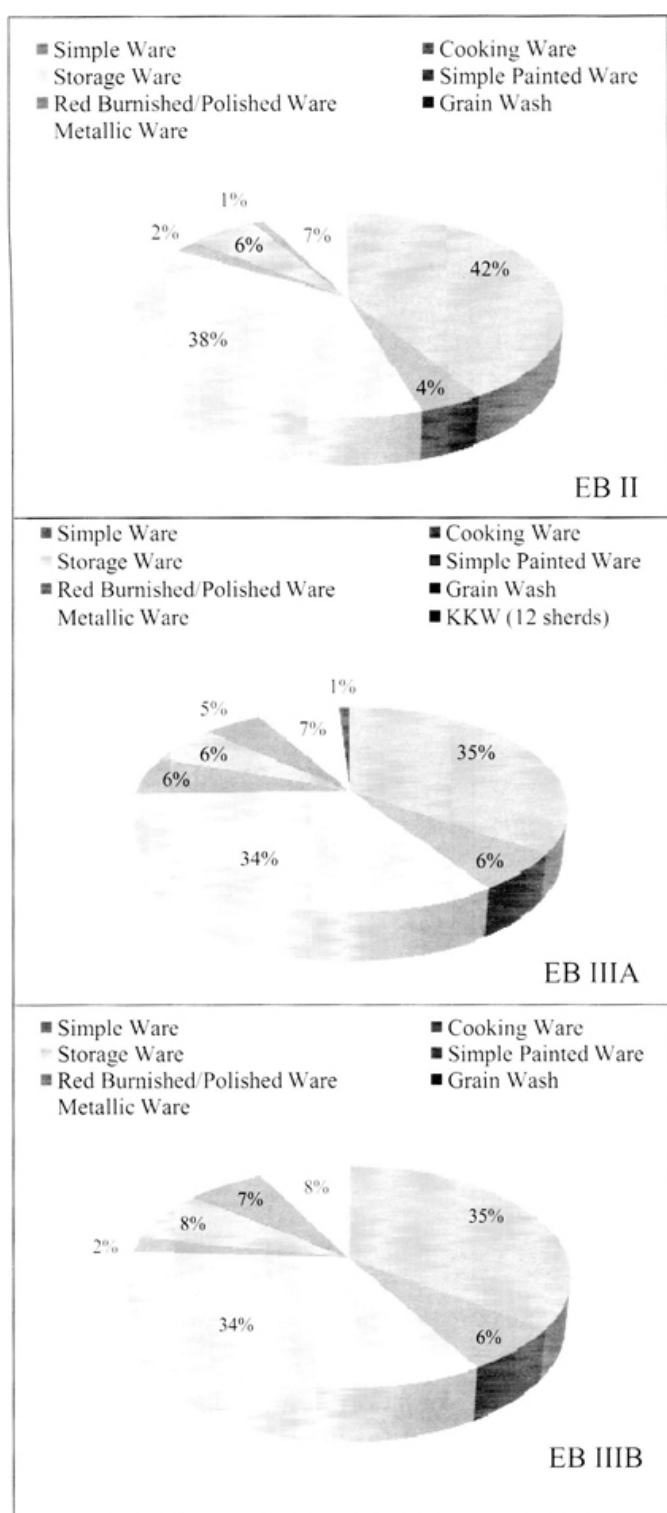
city-wall, and in Area B South, inside the EB II blocked city-gate (phase 5; Nigro ed. 2008: 75-76).

The Batrāwī II pottery repertoire finds comparisons in EB II layers at northern Palestinian and Transjordanian sites, primarily Khirbat az-Zayraqūn ("frühen Horizont", i.e. "Prä-Letztbenutzungsphase"; Genz 2002: 39-49, 119-120), Tall Abu al-Kharaz (strata IIA - IIB; Fischer 2000: 212-219, figs 12.5-12.8, 2008: 245-295) and Khirbet Kerak (period C; Greenberg *et al.* 2006: figs 2.15-2.16, 2.33, 3.29, 3.41-3.45, 5.78-5.82, 7.30-7.36, 8.53-8.86, 9.13), but also Tall al-Ḥandaqūq North (Mabry 1989), Tall as-Sa'idiyya (phases L3 - L2; Tubb 1988: figs 32, 35, 38, 1998: 44), Tall as-Sukhni North (Chesson *et al.* 1995), Tell el-Qadi (Greenberg 2000: 183-184), Beth Shan (stra-

Tabel. 1. Archaeological periodization and stratigraphic phases of Khirbat al-Batrāwī, with enlightened the main EB II, IIIA and IIIB contexts.

Site Period	Archaeological Period	Absolute Chronology	Stratigraphic phases				
			Area A	Area B North	Area B South	Area E	Area F
Batrawy I	EB I	3400-3000 BC	-	-	-	-	-
Batrawy II	EB II	3000-2700 BC	Phase 6	Phase 5b-a	Phase 5	Phase 4b-a	Phase 4
Batrawy IIIa	EB IIIA	2700-2500 BC	Phase 5	Phase 4b-a	Phase 4b-a	Phase 3	Phase 3
Batrawy IIIb	EB IIIB	2500-2300 BC	Phase 4b-a	Phase 3c-b	Phase 3d-b	-	-
Batrawy IVa	EB IVA	2300-2200 BC	Phase 3a	Phase 3a	Phase 3a	Phase 2	-
Batrawy IVb	EB IVB	2200-2000 BC	Phase 3d-b	Phase 2d-a	Phase 2g-a	-	Phase 2c-a
Batrawy V	Later Periods	2000 BC-1950 AD	Phase 2	-	-	-	-
Batrawy VI	Contemporary frequentation	1950-2007 AD	Phase 1	Phase 1	Phase 1	Phase 1	Phase 1

Tabel. 2. Graphics of attestation of different pottery productions in EB II, EB IIIA and EB IIIB periods.



4. Graphics of attestation of different pottery productions in EB II, EB IIIA and EB IIIB periods.

¹ The latter shape finds comparisons at EB II Tell el-Qassis (Ben-Tor *et al.* 2003: fig. 48:9), Tall es-Sultan (Garstang *et al.* 1935: pl. XXXIII:27) and Tell 'Arad (Amiran *et al.* 1978: pl. 13:10).

² They find comparisons at EB II Khirbat az-Zayraqūn (Genz 2002: pl. 14:14), Tell el-Qadi (Greenberg 2000: fig. 11.1:5), Qiryat Ata (Golani 2003: fig. 4.24:21), Tel Te'o (Greenberg 2001: fig. 8.1:11, 17), et-Tell (Callaway 1964: pl. XV:471), Khirbet Yarmouk (de

tum XIII / phase R12; Fitzgerald 1935: 13-15, pls IV-VI; Mazar *et al.* 2000: 255-260), Tell el-Qassis (strata XIIE - C in Area A and XIIC - B in Area B; Ben-Tor *et al.* 2003: 61-79, 95-110, figs 24-36, 46-54), Qiryat Ata (stratum I; Golani 2003: 121-147, figs 4.24-4.37), Khirbet Ras ed-Daliyeh (strata IV - II; Gophna and Iron-Lubin 1996: figs 46-64) and Tel Te'o (stratum III; Greenberg 2001).

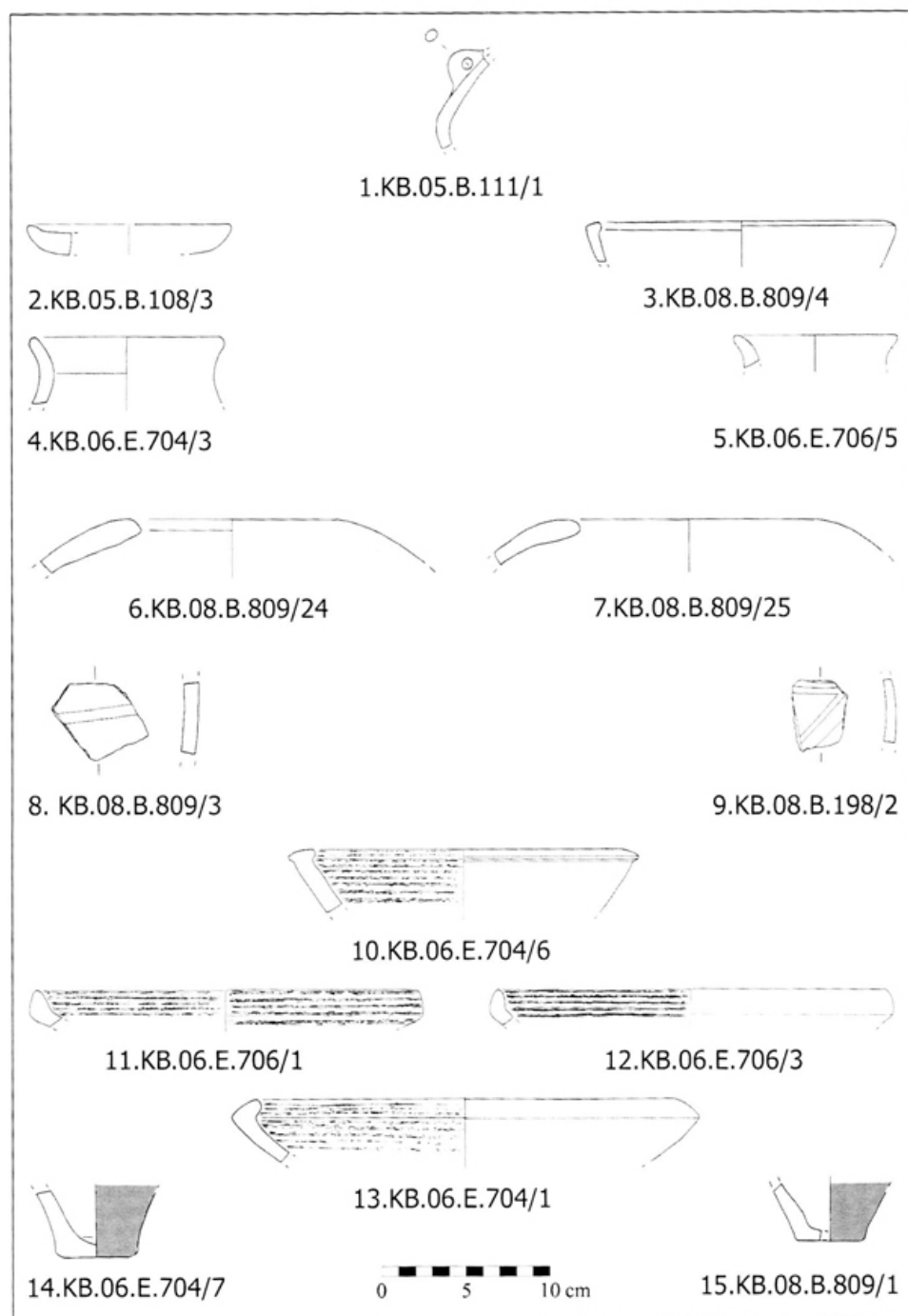
It also finds parallels at central and southern sites, such as et-Tell (strata III - V; Callaway 1972: 105-246, figs 26-58, 1980: 83-85, 123-125, figs 61-66, 68-70, 86-94), Tell es-Sultan (Garstang's levels V - IV; Kenyon's squares EIII - IV, phases L - D; Sala 2010), Khirbat Yarmouk (strata A1 - A4 in Area A, BIV in Area B, CVIII - CV in Area C, D1 - D5 in Area D, E0 - E2 in Area E and GV in Area G; de Miroschedji *et al.* 1988: 27, 69-76, pls 20-26, 2000: tab. 18.1), Arad (strata III - II; Amiran *et al.* 1978: 44-53, pls 13-51), Tall al-'Umayrī (IP 22; field D, phase 7; Harrison 1997; Herr 2000: fig. 2.3) and Bāb adh-Dhrā' (stratum III; Rast and Schaub 2003: 219-250, pls 24-44).

Batrāwī II table ware and serving vessels include distinctive EB II shapes, such as the common hemispherical bowls and shallow bowls with thick curved walls and pointed rims (FIG. 5:2)¹, deep bowls with in-turned rims (sometimes slightly projecting in and out; FIG. 5:3)²; *amphoriskoi* (FIG. 5:1)³ and medium size jars (*ca.* 20 - 30 cm high) for daily use and storage with ovoid bodies, flat bases, short flaring necks and everted rims (FIG. 5:4 - 5:5). Most of the pottery still appears hand-made, but open vessels are more frequently refined on a slow wheel, while necks and rims of jugs and jars are always manufactured on a wheel, testifying to the technological proficiency of the potters (London 1988). Vessels are commonly produced in light red, pink, pinkish-buff or very pale brown powdery fabrics, with mineral tempers usually consisting of small limestone grits.

As for cooking ware (FIG. 5:6 - 5:7), the main type represented in the Batrāwī II repertoire is the coil-built hole-mouth pot with ovoid shape and slightly swollen rounded or flattened rims, made of

Miroschedji *et al.* 1988: pl. 25:6), Tall es-Sultan (Garstang 1932: pl. IV:21 [Tomb A]; Kenyon 1960: fig. 25:5-6 [Tomb A127]; Sala 2010: 256, pl. LXX:19-21) and Tall al-'Umayrī (Harrison 2000b: fig. 5.15:2-3).

³ *Amphoriskoi* are common in contemporary EB II assemblages from Tall abū al-Kharaz. A parallel for the lug-handles of Batrāwī specimen KB.05.B.111/1 can be found in Fischer 2008: fig. 135:5.



5. EB II Simple, Simple Painted and Red Burnished/Polished Ware vessels.

a coarse reddish-brown / brown fabric with gritty chalk, limestone and mica tempers, which finds comparisons in both northern and southern Palestine, at EB II Tall as-Sukhni North (Chesson *et al.* 1995: fig. 3:2), Khirbet Kerak (Greenberg *et al.* 2006, figs 2.15:2, 3.29:3, 3.41:3, 5.79:4, 7.35:9), Tall es-Sultan (Kenyon and Holland 1983, fig. 56:20), and Arad (Amiran *et al.* 1978: pl. 45:19). Unfortunately, no whole vessels were recovered, so it is still unclear whether the Batrāwī II hole-mouth pots had a flat or round base (Greenberg 2006). However, the flat base of one pot was retrieved.

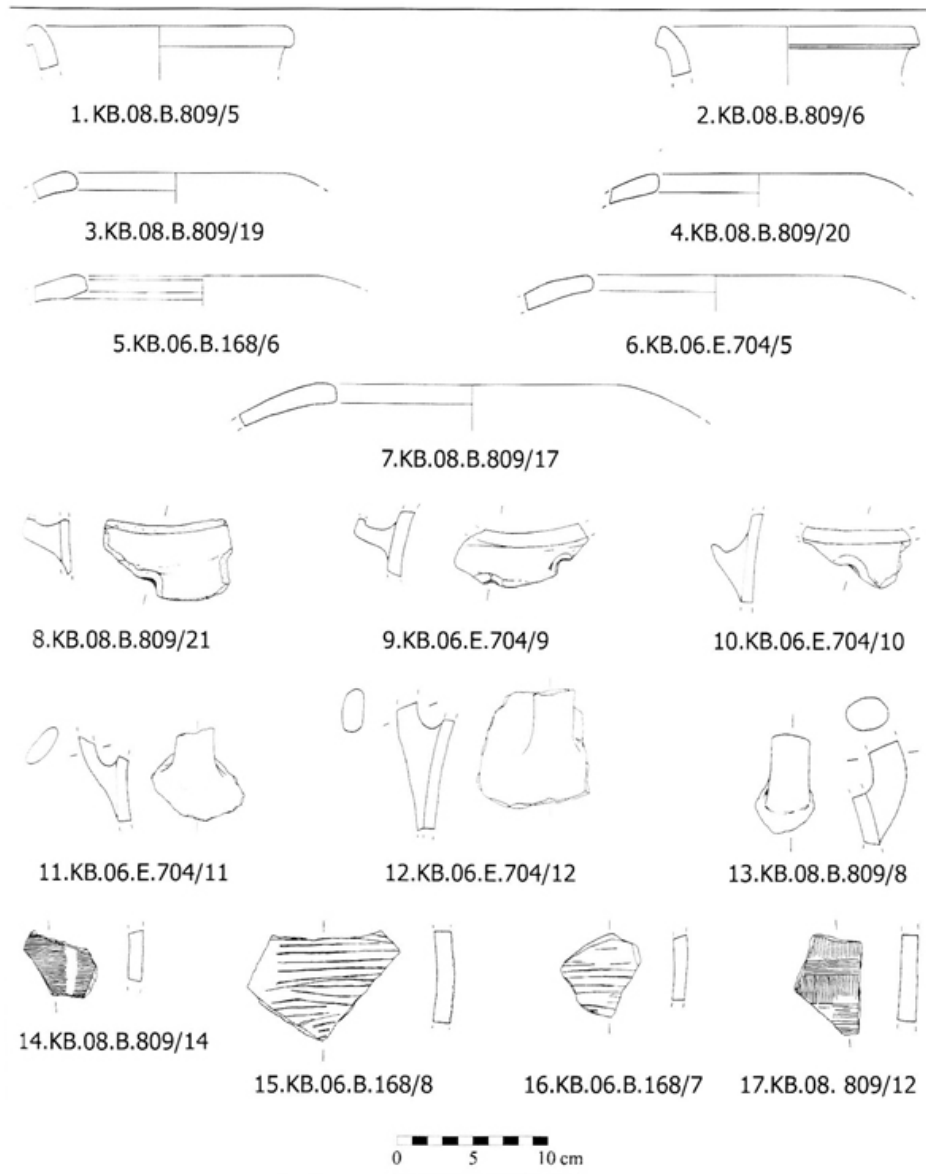
Nevertheless, at key northern Jordanian sites like Khirbat az-Zayraqūn (as at contemporary northern Palestinian sites; Greenberg 2006: 40-43), the typical cooking vessel is the squat-ovoid hole-mouth pot with rounded base (Genz 2002: pls 72:2-3, 73:1-2, 81) or the squat-ovoid pot with everted rim and rounded base (Genz 2002: pl. 73:3-4).

Batrāwī II storage ware vessels fall into three main functional classes: *pithoi* for long-term storage (more than 80 litres), medium-large jars and hole-mouth jars for medium-term storage (40 - 50 litres) and medium to medium-large jars with loop

handles, most likely for transport (30 - 40 litres). All storage vessels were coil-built, with necks and rims manufactured on a slow wheel. They were produced in light brown, light red, pink or reddish fabrics, sometimes with a reduced grey core. They could also be refined with an outer red / brown slip, horizontal or alternating horizontal and vertical combing (FIG. 6:14 - 6:17) or, occasionally, the so-called 'grain-wash' decoration, inherited from the preceding EB I tradition and consisting of painted irregular orange / red / brown vertical or crossing bands. This type of decoration continued to be used in northern Palestine during EB II, mainly on *pithoi* and storage jars, as attested to by the assemblag-

es of Khirbet Kerak (Greenberg *et al.* 2006: figs 2.15:3, 5.79:6, 5.82:3,7, 8.58:7, 8.80:6), Khirbat az-Zayraqūn (Genz 2000), Tall as-Sukhni North (Chesson *et al.* 1995: fig. 3:14), Tall Abū al-Kharaz (Fischer 2008: figs 49:4,10, 51:10) and Tall al-Ḥandaquq North (Mabry 1989: 78-79, figs 10:11).

The Batrāwī II storage ware repertoire is mostly represented by coil-built hole-mouth jars (FIG. 6:3 - 6:7), which were the typical storage container in dwellings as attested to in particular by contemporary assemblages from EB II dwellings at Tall es-Sultan (Sala 2010: 260-261), et-Tell⁴ and Tell 'Arad⁵ (Ilan 2001: tab. 18.6-18.7). They had an ovoid body, flat base and plain, flattened or swollen rim.



6. EB II Storage and Metallic Ware vessels.

⁴ Callaway 1972: figs 28, 29, 30:1-11, 38, 39:1-11, 47, 48, 49:1-2, 4-5, 1980: figs. 64, 65:1-9, 11-13, 18-20, 22, 24, 69:10-28, 86:24-

28, 30, 88:1-14, 16, 89:6, 8-10, 91:2-9, 11-14.

⁵ Amiran *et al.* 1978: pls 19-21, 46-51.

Transport jars with ovoid shape, flaring necks and vertical handles (FIG. 6:11 - 6:13) are widely known, being common on northern Palestinian sites; they were often also produced in metallic ware (see below).

Large *pithoi* with flaring necks and everted thickened rounded rims (FIG. 6:1)⁶, or everted squared or triangular rims (FIG. 6:2)⁷, are present but less common.

Metallic ware, an EB II diagnostic of northern Palestine (Greenberg and Porat 1996), is so far present at Khirbat al-Batrāwī in the distinctive class of pattern-combed jars. These exhibit ovoid bodies, flaring necks and loop handles, and were used for the storage and above all transport of specific products (Greenberg and Porat 1996: 10-11), including olive oil. These vessels were always refined by fairly regular horizontal or alternating horizontal and vertical outer combing. Highly fired, hand-made, metallic ware jars were produced in a red / orange fabric or, occasionally, a dark gray fabric in thicker vessels. In section, the fabric is generally uniform in appearance, evenly fired but rather coarse grained, with grey cores appearing in large vessels. The same 'metallic orange / reddish ware' production is widely present in northern Transjordan and Jordan, as for example at Tall al-Ḥandaqūq North (Mabry 1989: 79) and Khirbat az-Zayraqūn (Genz 2002: 30).

Simple painted ware is only present in low frequencies during the Batrāwī II phase, consisting of a few fine bowl and small jar fragments, with tiny white and black grits, sometimes refined by a white / cream slip. Painted decoration is represented by red, reddish-brown and grey vertical, oblique or crossing lines, painted either on curved bowls or small jars (FIG. 5:8 - 5:9). Decoration and patterns are very simple and the vessels belong to the ordi-

nary domestic repertoire⁸. Another type of painted decoration is 'grain-wash', but this was used mainly on storage containers (see above).

The main fine and specialised production of the Batrāwī II phase is represented by red-burnished and polished ware (Amiran 1969: 58-59; Esse 1991: 104-107). Red-burnished platters, 30 to 45 cm in diameter (with a diameter to depth ratio of at least 4 : 1) (FIG. 5:11 - 5:12), are the main eating and serving table ware vessels and become a hallmark of the EB II period all over Palestine (Ilan 2001: 343)⁹. They are always red-burnished inside, with a horizontal, radial or net pattern, and often outside as well. They have a flat base, straight oblique to slightly curved walls and a short triangular or slightly in-turned rim, either thickened or tapered. A concavity is sometimes present below the rim¹⁰.

Batrāwī II red-burnished production also includes platter-bowls with curved walls and in-turned rims (FIG. 5:13), which find comparisons at EB II Tall Abū al-Kharaz (Fischer 2008: fig. 145:8), Tall as-Sukhna North (Chesson *et al.* 1995: fig. 3:7), in the EB II Kinneret Tomb (Mazar *et al.* 1973: fig. 6:26), Khirbet Kerak (Greenberg *et al.* 2006: figs 5.78:4, 7.31:6), Qiryat Ata (Golani 2003: figs 4.25:18, 4.35:10, 13), Tall es-Sultan (Kenyon and Holland 1983: fig. 51:1, 4, 53:1, 95:11) and Tell 'Arad (Amiran *et al.* 1978: pl. 23:15). There are also bowls with straight walls and in-turned (sometimes projecting in and out) rims (FIG. 5:10), a shape which is present at EB II Khirbat az-Zayraqūn (Genz 2002: pls 45:5, 68:4, 77:8) and Tall es-Sultan (Garstang *et al.* 1936: pl. XXXVI-II:4).

Finally, red-burnished and polished jugs and juglets (FIG. 5:14 - 5:15) with a flat or sometimes slightly stump base (as in contemporary EB II rep-

⁶ This type finds comparisons at EB II Khirbat az-Zayraqūn (Genz 2002: pl. 19:14), Tall as-Sukhna North (Chesson *et al.* 1995: fig. 3:9), Khirbet Yarmouk (de Miroschedji *et al.* 1988: pl. 21:18) and Tall al-'Umayrī (Harrison 2000b: fig. 5.14:1-3).

⁷ They find comparisons at EB II Tall al-Ḥandaqūq North (Mabry 1989: fig. 10:11), Tall es-Sultan (Kenyon and Holland 1983: fig. 141:5), Khirbet Yarmouk (de Miroschedji *et al.* 1988: pl. 20:8) and Tall al-'Umayrī (Harrison 2000b: fig. 5.14:5).

⁸ This is the type of painted decoration that G. Charloix (2006) has recently defined as "céramique aux lignes peintes A" in order to differentiate it from specialised production, such as line-painted ware (designated "céramique aux lignes peintes B"), which was still present in central and southern Palestine during EB II. It is attested to at other key EB II sites, such as Tall as-Sa'īdiyya (Tubb 1989: fig. 4:7, 1998: pl. 4b), Tall Abū al-Kharaz (Fischer 2000:

fig. 12.8:6, 2008: figs 139:1, 154:9-10) and Tall es-Sultan (Sala 2010: 262).

⁹ Represented in the EB II pottery repertoires of Tall Abū al-Kharaz (Fischer 2008: figs 43:3, 47:16, 51:3, 133:15-17, 134:2-3, 207:1-2), Qiryat Ata (Golani 2003: fig. 4.25:13-15), Khirbet Ras ed-Daliyeh (Gophna and Iron-Lubin 1996, fig. 50:6), Tel Te'o (Greenberg 2001: fig. 8.1:14), et-Tell (Callaway 1972: fig. 36:8-17, 44:14, 1980: fig. 62:7.9, 68:9, 11, 13, 15, 86:4, 12, 92:11, 19, 22, 24), Tall es-Sultan (Kenyon and Holland 1983: figs 53:20, 95:12; Sala 2010: 263, pl. LXXXVIII:9-14) and Tell 'Arad (Amiran *et al.* 1978: pls 13:39-40, 23:1-3).

¹⁰ The body of the platter was pressed into a mould and the rim attached afterwards; the rim and its join with the vessel were then smoothed on a slow wheel.

ertoires from Tall Abu al-Kharaz [Fischer 2008: fig. 135:9-10, 12-15] and Qiryat Ata [Golani 2003: fig. 4.29:7-8, 12-15]) are the main 'luxury' container of this phase (Esse 1991: 104-107), which may have been used for grape-juice and / or ointments.

3. EB IIIA Pottery Repertoire

A second violent destruction, represented by a thick dark grey layer of charcoal, ash and burnt fragments of yellowish mud-bricks, marks the dramatic end - evidently by fire - of the EB IIIA town of Batrāwī (Nigro 2009a: 668, 2010b: 439). EB IIIA contexts are thus sealed without any disturbance. They have been excavated in Area B North, between the main city-wall and outer wall W.155, and north of scarp-wall W.177 directly over bedrock (phase 4; Nigro 2007: 350-351; Nigro ed. 2008: 73-74; Nigro and Sala 2009: 374-375). The same destruction layer was also exposed within the town in Area B South, in the street (L.148 + L.458) running parallel to the main city-wall and inside the EB II blocked city-gate (phase 4; Nigro 2006: 243-244, 2007: 354; Nigro ed. 2006: 165, 184-185, 2008: 145-150). Some EB IIIA material was also recovered from the acropolis, in Area A East, scattered directly over the bedrock (phase 5; Nigro ed. 2006: 75).

EB IIIA and EB IIIB ceramic repertoires are often dealt with in the literature as a single entity, because of the undeniable continuity in both vessel shapes and productions between the two phases. Nevertheless, the well-defined stratigraphy of the EB II - III fortified town of Khirbat al-Batrāwī has allowed us to put the distinction between the EB IIIA and EB IIIB assemblages on a coherent stratigraphic basis. Thus, the evolution of some shapes and differences between fabrics can be summarised, as can the diversification and diffusion of some specialised production between the two periods.

The Batrāwī IIIA pottery repertoire finds comparisons in the EB IIIA layers of northern Palestinian and Transjordan sites, mainly Khirbat az-Zayraqūn ('mittlere Horizont'; Genz 2002: 120) and Khirbet Kerak (early period D; Greenberg *et al.* 2006: figs 2.17, 3.46-3.47, 5.83-5.90, 7.37, 7.41-7.42, 7.44-7.49, 8.87-8.99), but also Tall ash-Shunih (period V; Leonard 1992: 49-55), Beth Shan (strata XII -

lower XI / phase R11 - R7b; Fitzgerald 1935: 15-20, pls VII-X; Mazar *et al.* 2000: figs 14.3-14) and Tell el-Qassis (stratum XIIA in Area A and XIIA in Area B; Ben-Tor *et al.* 2003: 80-91, 111-119).

It also finds parallels at contemporary central and southern sites, such as et-Tell (stratum VI; Callaway 1972: 257-291, 1980: 159-183), Tall es-Sultan (Garstang's level III; Kenyon's squares EIII - IV, phases C - A; phase Sultan IIIc1), Khirbet Yarmouk (strata A5 in Area A, BIII in Area B, CIV - CIII in Area C, D6 in Area D, E3 in Area E, GIV in Area G; de Miroschedji *et al.* 1988: 76-80, pls 27-40, 2000: tab. 18.1, figs 18.3-18.4), Tell el-Hesi (stratum 4c - b; Fargo 1979), Tall al-'Umayrī (IP 21 - 20; field D, phases 6 - 5; Harrison 1997; Herr 2000: fig. 2.3) and Bāb adh-Dhrā' (stratum II).

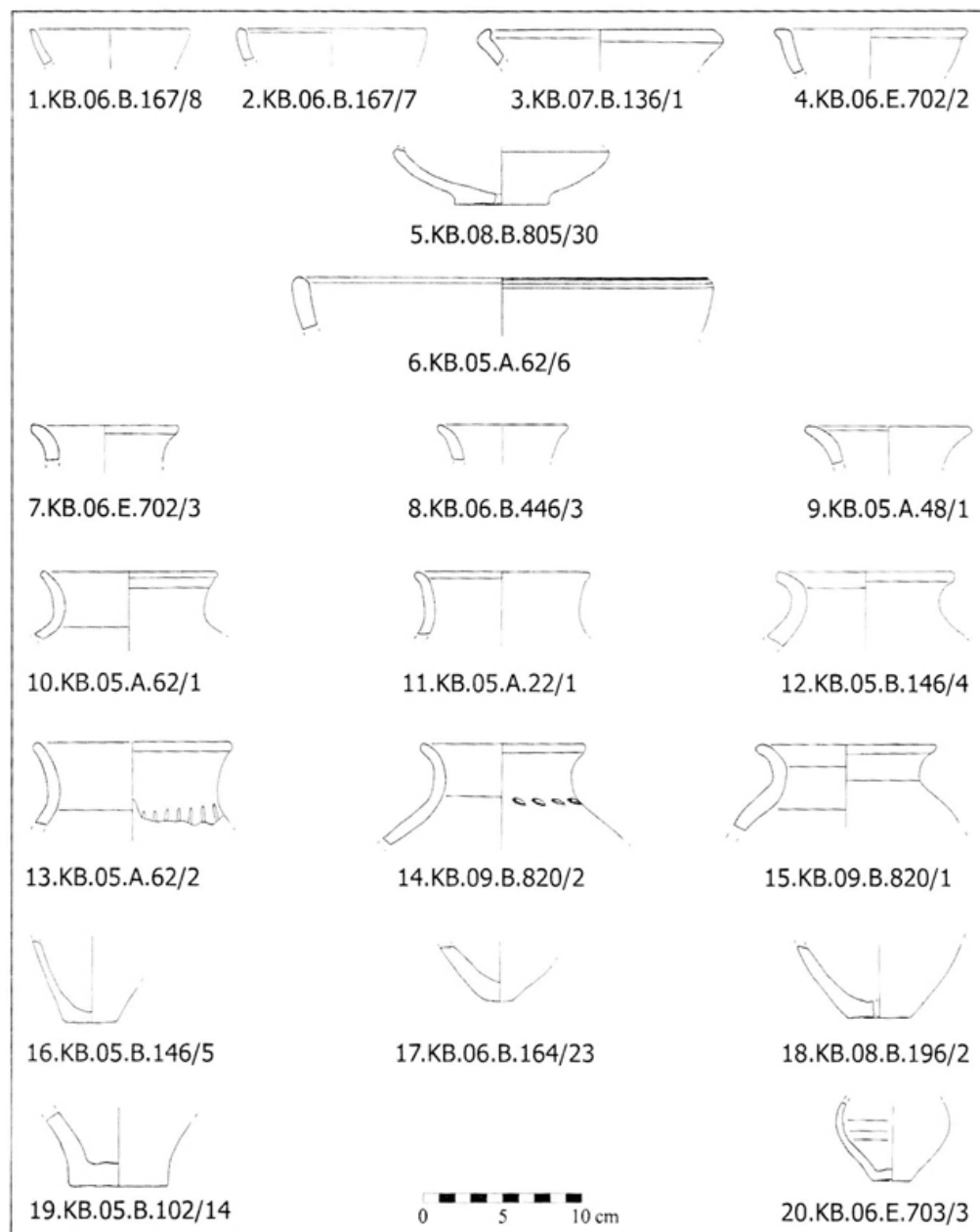
The transition to EB III, the period which witnessed the major flourishing of the town, was marked first by a clear standardisation in terms of shape, fabric and function of pottery production, and second by a significant increase in the number and variety of fine and specialised wares, thereby testifying to fundamental changes in patterns of production and consumption. The simple painted and red-burnished / polished wares become more widespread and of better quality, along with pattern-combed metallic ware; Khirbet Kerak ware also makes its appearance.

The shape and surface treatment of the majority of vessels are still based on that of the previous EB II period, but shows a higher standard of manufacture, finishing and firing. In the meantime, fabrics become more standardised and sieved, with a preponderance of well-fired, well-tempered (always mineral, usually with calcite grits) light red and reddish-yellow fabrics. Vessels are usually well-finished, with well-levigated surfaces.

Plain ware mostly continues EB II traditions, as evidenced by the large number of bowls with curved walls and plain or pointed rims (FIG. 7:1 - 7:2) and bowls with in-turned rims (FIG. 7:3)¹¹. Deep bowls with curved walls and everted rims also appear (FIG. 7:4), as in contemporary layers at et-Tell (stratum VI; Callaway 1980: fig. 108:18-19), Tall es-Sultan (phase Sultan IIIb1; Kenyon and Holland 1983: fig. 59:5; Marchetti and Nigro eds 2000: fig. 1:32:1), Tell el-Hesi (Fargo 1979: fig. 1:10) and Tall al-'Umayrī (Harrison 2000b: fig.

¹¹ This shape is widely present in EB IIIA contexts, as attested at et-Tell (stratum VI; Callaway 1972: fig. 60:6, 1980: fig. 109:20), Tall es-Sultan (phase Sultan IIIb1; Marchetti and Nigro eds

2000: fig. 1:49:4) and Tall al-'Umayrī (Harrison 2000b: fig. 5.22:10).



7. EB IIIA Simple Ware vessels.

5.22:6). The disc of bowl KB.08.B.805/30 (FIG. 7:5) finds comparisons at EB IIIA Beth Shan (stratum XII; Fitzgerald 1935: pl. VIII:13) and Tall es-Sultan (Garstang 1932: pl. IV:1-2, 4; Kenyon and Holland 1983: fig. 59:6). Vats with straight wide oblique walls and large bowls / kraters with slightly splaying out walls (FIG. 7:6)¹², occasionally with pushed-up ledge handles and sometimes refined with pattern-combed decoration, are also present. These may have been linked to an increase in communal food-production (e.g. olive oil and brewing; Esse 1991: 119-124; Ilan 2001: 343; Tubb 1998: 44, pl. 4a).

An increase in the frequency of jugs and juglets with stump or tapering bases, typical of this phase, is also noticeable (FIG. 7:16 - 7:20). In jugs, as well as in small and medium size jars (FIG. 7:7 - 7:15)¹³, rims and necks are now commonly manufactured on a slow wheel, the use of which becomes widespread. This leads towards a progressive standardisation of some of the main shapes of each functional class.

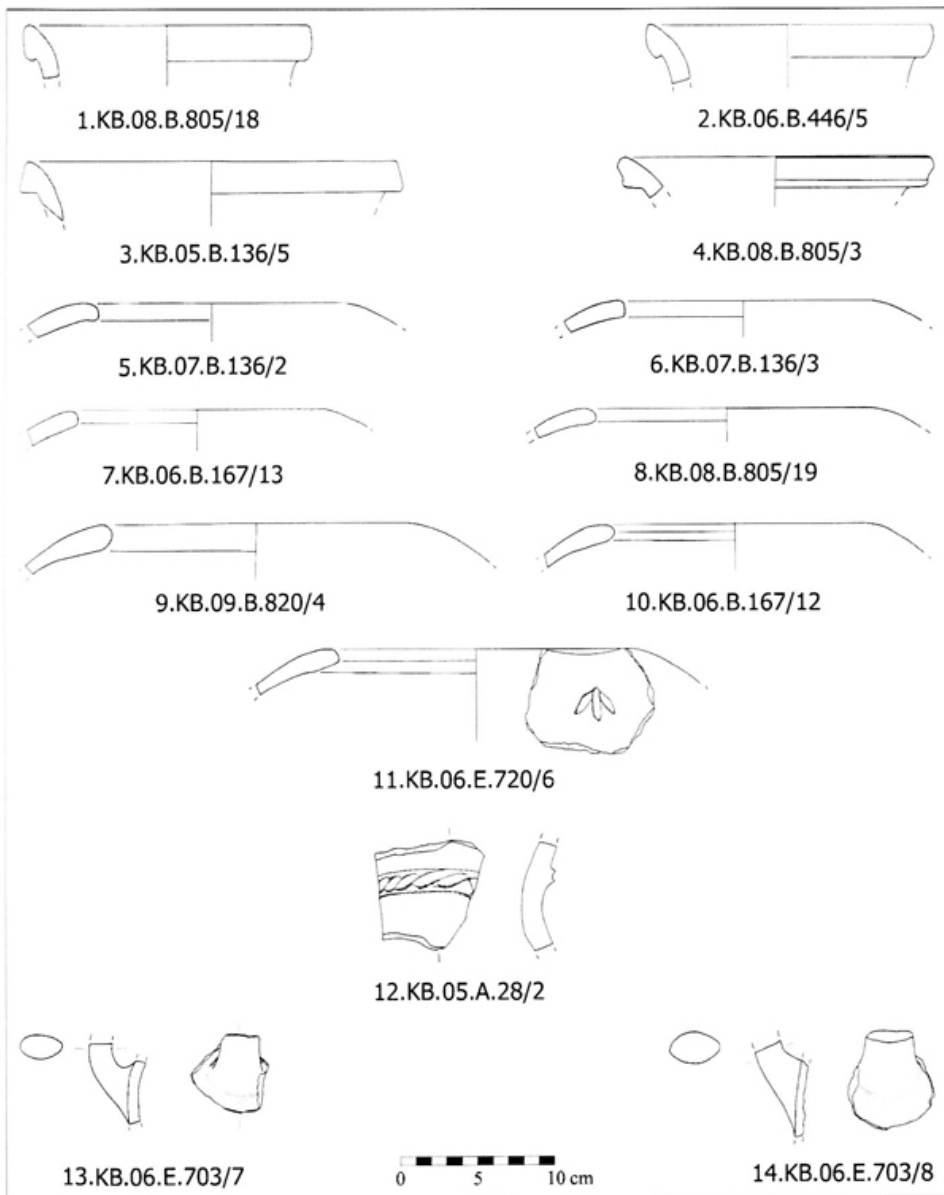
As regards cooking ware, the coil-built hole-mouth pot with ovoid shape and slightly swollen rounded or flattened rims even represents the main type in the Batrāwī III repertoire.

¹² The latter shape finds comparisons at et-Tell (Callaway 1972: fig. 62:24, 27) and Tall es-Sultan (Kenyon and Holland 1982: fig. 71:10-11).

¹³ For comparisons see et-Tell (stratum VI; Callaway 1972: fig. 61:6-7, 9-20, 1980: fig. 111:12-23).

EB IIIA storage ware is still illustrated by the three morphological and functional classes of the previous Batrāwī II period. *Pithoi* for long-term storage are characterised by an elongated ovoid body, flaring neck and rope-like plastic decoration usually applied at the base of the neck (FIG. 8:12) to hide the joins of different parts of the vessel (coil-built body and wheel-turned neck). They now exhibit different rim profiles: everted thickened rims (FIG. 8:1 - 8:2), everted triangular rims (FIG. 8:3) and everted outer-folded ridged rims (FIG. 8:4)¹⁴; the latter were to become a hallmark of the whole EB III period.

Ovoid-shaped jars with flaring necks, everted rims and loop handles (FIG. 8:13- 8:14), sometimes characterised by horizontal or alternating horizontal and vertical combing (FIG. 9:7 - 9:14) and mainly used for transport, continue to be widely produced, as are ovoid-shaped hole-mouth jars for household storage, with slightly swollen rounded or flattened rims (FIG. 8:5 - 8:11). Flattened recessed rims also appear and spread during the Batrāwī IIIa period¹⁵. The use of 'grain-wash' decoration (in orange, red or dark grey) also increases in this phase (FIG. 9:1 - 9:6), as evidenced in the EB III pottery assemblage of Khirbat az-Zayraqūn (where 'grain-wash'

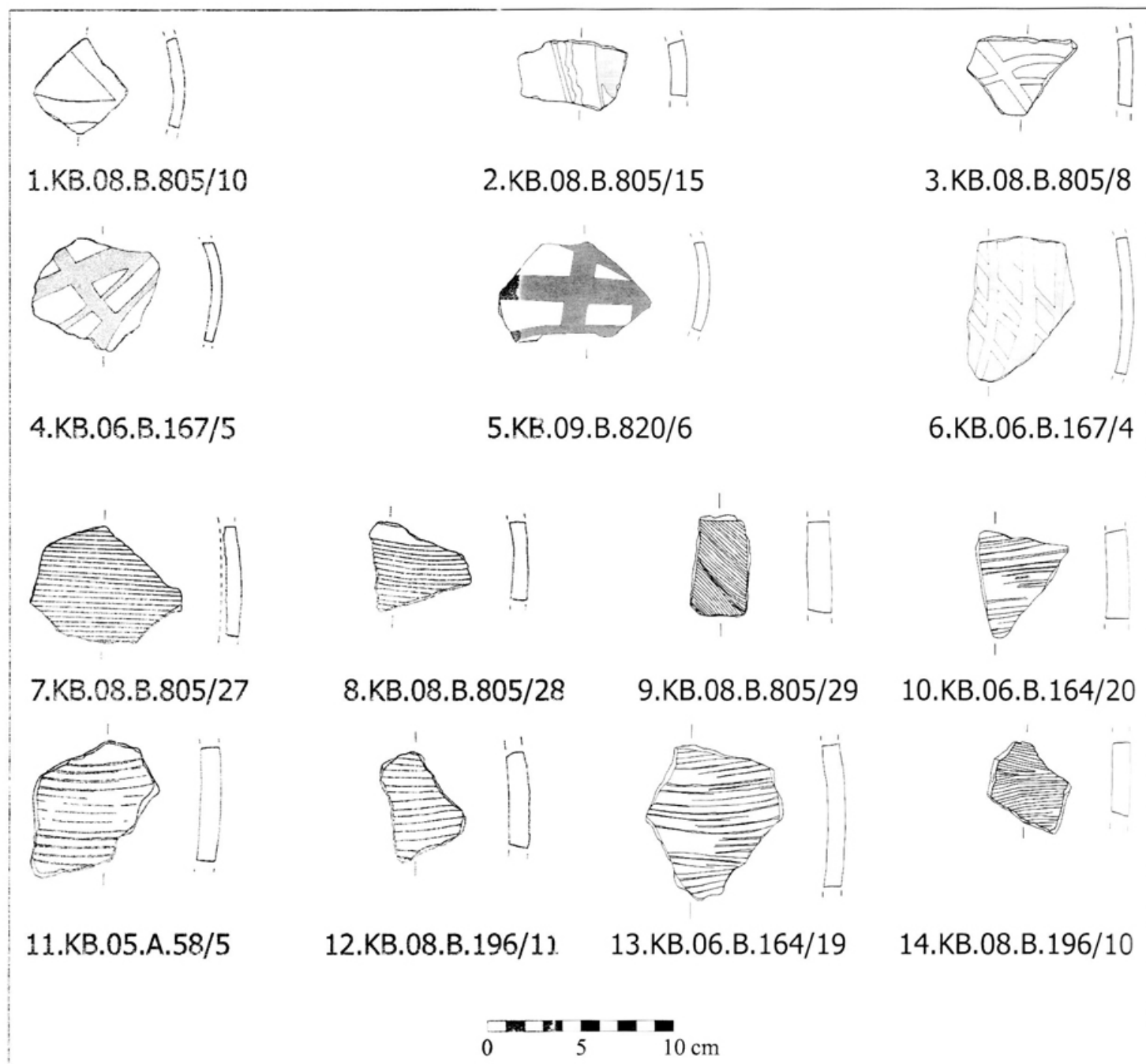


8. EB IIIA Storage Ware vessels.

¹⁴ For comparisons see Khirbet Kerak (Greenberg *et al.* 2006: figs 5.84:20), et-Tell (stratum VI; Callaway 1980: fig. 111:36-38), Khirbet Yarmouk (de Miroschedji *et al.* 1988: pl. 29:4) and Tall al-'Umayrī (Daviau 1991: figs 6.10:16, 18, 6.21:5, 8; Harrison 1997:

fig. 5.9:5, 2000b: fig. 5.21:12-15).

¹⁵ As evidenced in EB III layers at Tall al-'Umayrī (Daviau 1991: figs 6.10:3-6, 6.20:27-29, 6.23:24, 27-28).



9. Samples of EB IIIA Grain Wash and combed decorations.

decoration is mainly applied on *pithoi*, with striking parallels in the Batrāwī samples; Genz 2002: 35, pls 35:3, 62, 76:2, 87, 154:d-e).

Pattern-combed metallic jars with ovoid body and loop handles, made of a highly-fired orange / reddish or grey fabric and always with fairly regular horizontal or alternating horizontal and vertical combing, are still produced. They may have been associated with the trade in olive oil from the countryside, as evidenced in contemporary layers at Khirbet Kerak (early period D; Greenberg *et al.* 2006: figs 5.88:9, 7.49:3, 8.91:14) and Tell el-Qas-

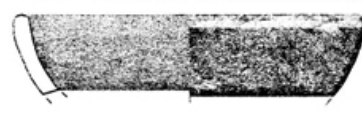
sis (stratum XIIA; Ben-Tor *et al.* 2003: fig. 38:8).

Fine and specialised production also increases significantly in scale and variety during the EB IIIA, perhaps testifying to the rank and wealth of an emerging urban elite which promoted the production and acquisition of fine wares.

In EB IIIA, simple painted ware reaches its highest frequency of the entire EB II - III period (FIG. 10:7 - 10:13), as was apparently also the case in contemporary layers at Tall es-Sultan, Khirbet Yarmouk, et-Tell, Tell el-Hesi and Tall al-'Umayri (painted decoration declined in frequency in the



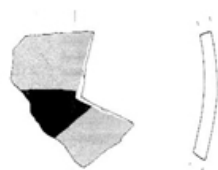
1.KB.09.B.820/10



2.KB.08.B.802/1



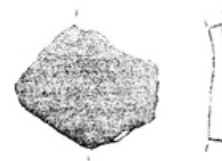
3.KB.09.B.820/12



4.KB.09.B.820/13



5.KB.09.B.820/11



6.KB.08.B.805/6



7.KB.05.B.126/4



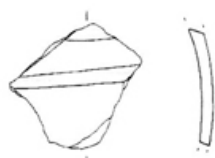
8.KB.08.B.196/1



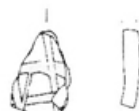
9.KB.05.B.146/15



10.KB.06.E.701/1



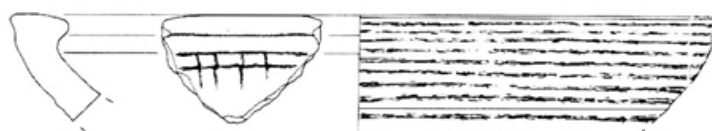
11.KB.06.E.701/2



12.KB.06.B.157/1



13.KB.08.B.805/13



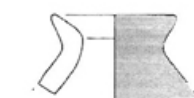
14.KB.08.B.805/1



15.KB.06.E.702/4



16.KB.06.B.446/1



17.KB.06.B.174/3



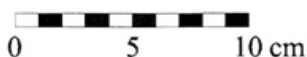
18.KB.05.B.146/7



19.KB.06.E.703/4



20.KB.06.B.164/24



following EB IIIB). Painted decoration consisting of narrow oblique or crossing orange / red stripes is mainly employed in open shapes, *viz.* curved bowls with pointed rims (FIG. 10:7) and bowls with the in-turned flattened rim typical of this period (FIG. 10:8). The latter shape has a remarkable parallel at Tall al-‘Umayrī (Harrison 2000a: fig. 19.2:25, 2000b: fig. 4.22:9)¹⁶. Also decorated in this manner are small vats with in-turned rims (FIG. 10:9), which find a parallel in a specimen from EB IIIA Khirbet Yarmouk (de Miroschedji 2000: fig. 18.3:3); the shape is likewise known from contemporary contexts at Khirbat az-Zayraqūn (Genz 2002: pl. 34:1). This decoration is also applied to small jars and jugs¹⁷. While a painted decoration with larger, more irregular bands is sometimes present.

Red-burnished and polished ware continues to be produced in bowls with straight sides and upright or in-turned rims and in platters with upright triangular rims (FIG. 10:15 - 10:16), radially, horizontally or net-burnished. It also continues to be produced in jugs and juglets with a flat or stump base (FIG. 10:17 - 10:20). Large bowls, 30 - 35 cm in diameter, with thick curved walls and sharply in-turned rims (FIG. 10:14), red slipped and burnished both inside and out, were also recovered from EB IIIA layers. These are also known from contemporary EB IIIA repertoires from Khirbat az-Zayraqūn (Genz 2002: pl. 38:4), Khirbet Kerak (early period D; Greenberg *et al.* 2006: figs 5.83:4, 8.87:4), Tell ed-Duweir (Tufnell 1958: pl. 58:91) and Khirbet Yarmouk (de Miroschedji 2000: fig. 18.3:10).

The hallmark of the Batrāwī IIIa repertoire is represented, as at most contemporary sites in northern Palestine and Transjordan, by the appearance of Khirbet Kerak ware in the form of curved bowls, sinuous-sided bowls and red-polished and black lustrous jugs.

Bowls (12 - 15 cm diameter) with curved walls, flat bases and rounded or pointed rims, black-polished outside and red-polished inside (and

sometimes outside around and below the rim), are a common shape (specimens KB.06.B.164/1, KB.08.B.802/1; FIG. 10:2) which has parallels from the ‘Amuq plain in Syria (Braidwood and Braidwood 1960: fig. 281:14-15), Tell Waqqas (Greenberg 1997: fig. III.4:14) and Khirbet Kerak (Getzov 2006: fig. 3.51:2) in northern Palestine, and Tall es-Sultan (Garstang *et al.* 1935, pl. XXVII:7; Nigro 2009b: fig. 9:TS.99.F.215.16) in southern Palestine. One bowl (KB.09.B.820/10; FIG. 10:1) exhibits an unusual reverse colouring of the inner / outer surfaces, since it is black-polished inside (and outside around the rim) and red-polished outside. This reversal is quite odd in Palestinian contexts.

A large black-polished bowl (KB.09.B.820/12; FIG. 10:3), with curved walls, in-turned rim and incised decoration on the rim, finds comparisons at Khirbet Kerak (Greenberg *et al.* 2006: fig. 7:48:3, although this specimen is red-polished inside and outside, as it is more usual for this category of vessels) and at Tall ash-Shuna (Leonard 1992: pl. 14:5).

A bowl with sinuous-sided profile and pointed rim, black-polished inside and outside, red-polished outside over the rim (KB.09.B.820/11; FIG. 10:5) is a typical Khirbet Kerak ware vessel, which finds comparisons both in the ‘Amuq plain in Syria (Braidwood - Braidwood 1960, fig. 281: 25-27) and in Palestine from Khirbet Kerak (Greenberg *et al.* 2006: fig. 2.35: 3) to Tall es-Sultan (Garstang *et al.* 1935: pl. XXVIII: 23; Kenyon 1960: fig. 38: 28).

Finally, some fragments of black lustrous jugs were recovered, which have parallels at both Khirbat az-Zayraqūn (Genz 2002: pl. 67:5) and Tall es-Sultan (Marchetti and Nigro eds 2000: 30, fig. 1:39:2-3). A red lustrous jug (KB.08.B.805/6; FIG. 10:6) was also recovered, with a parallel in the contemporary repertoire from Beth Shan (Fitzgerald 1935: 19, pl. VII:12-18), while a jug (KB.09.B.820/13; FIG. 10:4) displays the red to black colour change of the outer slip more common on other Khirbet Kerak shapes, but is also similar

¹⁶ For comparisons see Beth Shan (stratum XII; Fitzgerald 1935: pl. VIII:10), Khirbet Yarmouk (de Miroschedji 2000: fig. 18.3:4), et-Tell (stratum VI; Callaway 1972: fig. 66:6-17, 1980: fig. 125:33), Tall es-Sultan (phase Sultan IIIB1; Garstang 1932: pl. VIII:10-12; Kenyon 1960: fig. 57:24; Kenyon and Holland 1983: figs 13:3, 17:13, 18:40, 57:15, 60:9, 152:4-5, 159:10; Marchetti and Nigro eds 2000: figs 1:40:2, 13-15, 21), Tell el-Hesi (Fargo 1979: fig. 1:13, 15, 20) and Tall al-‘Umayrī (Daviau 1991: figs 6.22:44-45, 6.23:19-20, 6.33:2-3, 5-6, 12-13, 29, 33, 35; Harrison 1997: fig. 5.9:18, 2000a: 349, fig. 19.2:4, 25,

2000b: fig. 5.21:30-31).

¹⁷ For comparisons see painted specimens from Khirbat az-Zayraqūn (Genz 2002: pls 53:12, 136:10, 13), Khirbet Kerak (early period D; Greenberg *et al.* 2006: figs 2.17, 5.88:4, 7, 7.49:4, 8.89:8), Beth Shan (stratum XII; Fitzgerald 1935: pl. IX:23), Tall es-Sultan (phase Sultan IIIB1; Kenyon 1960: fig. 35:25; Kenyon and Holland 1983: fig. 144:12; Marchetti and Nigro eds 2000: fig. 1:40:18-19, 22-25, 1:49:8-9) and Tell el-Hesi (Fargo 1979: fig. 1:6).

to a specimen from Khirbat az-Zayraqūn (Genz 2002: pls 4:3, 159:B).

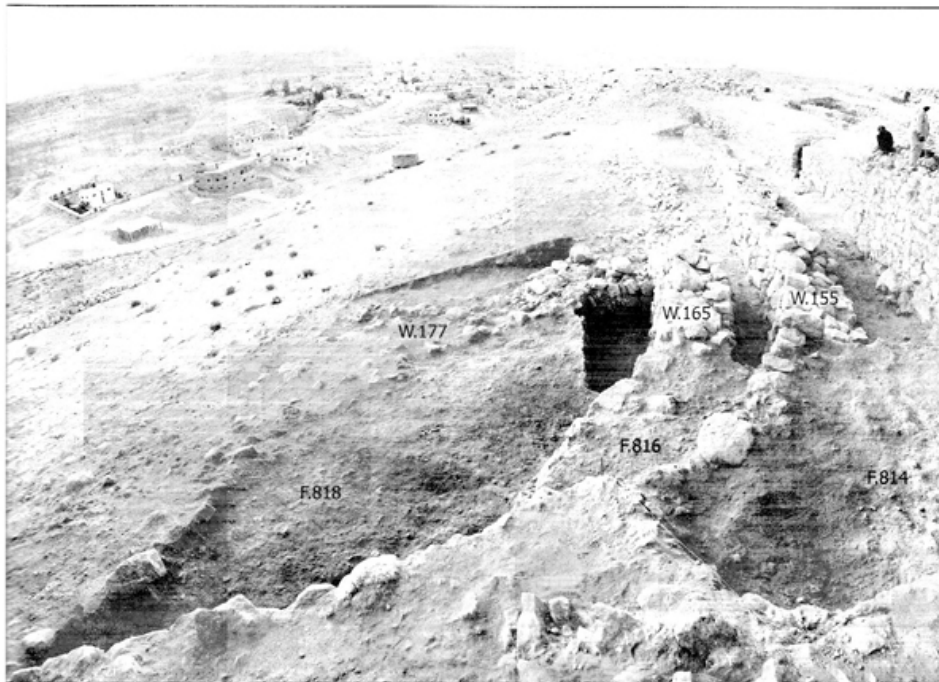
4. EB IIIB Pottery Repertoire

The EB IIIB period was investigated mainly in Area B. In Area B North, this included excavations outside the EB II - III main city-wall, in the EB IIIB destruction layers marking the final destruction of the EBA town (phase 3; Nigro 2009a: 670, 2010b: 441) excavated between the main city-wall and outer wall W.155, between the outer wall and scarp-wall W.165, and to the north of the latter (FIG. 11; Nigro ed. 2008: 69; 2012: 24-27; Nigro and Sala 2009: 374-375). In Area B South, this included the EB IIIB layers excavated inside dwellings (house B2) and public buildings (building B1) erected at the beginning of EB IIIB along the street (L.133+L.1060) running parallel to the main city-wall (phase 3; Nigro ed. 2008: 137-143; 2012: 162-167). EB IIIB destruction layers were excavated in the street itself, which yielded a large quantity of diagnostic material. The discovery in 2009 of a third building west of building B1, designated Building B1, yielded an assemblage of complete vessels dating to this phase, among which twenty *pithoi* placed along the walls of the building¹⁸.

EB IIIB strata and structures were also exposed on the acropolis, in Area A. However, these were

in a very poor state of preservation owing to the violent destruction and subsequent levelling activities undertaken by the inhabitants of the EB IVB village which grew up in this area at the end of the 3rd millennium BC. Nevertheless, the corner of a rectangular building reinforced on the outer side with a bench, which was associated with an open courtyard paved with limestone grits (Area A East, phase 4; Nigro ed. 2006: 109-116), and a broad stone structure flanked by a series of food production and storage installations (Area A West, phase 4; Nigro 2007: 349; Nigro ed. 2008: 20-27) were exposed. These were associated with a group of fragmentary storage containers, mainly *pithoi*, characterised by the typical rope-like decoration applied at the base of the neck and on the middle of the body.

Batrāwī IIIB pottery production is characterised by a further leap in the direction of standardisation of both shapes and fabrics. Use of a wheel becomes ordinary to make the upper parts of medium and large size vessels (necks and rims of jars and *pithoi*, and sometimes the rims of hole-mouth jars), as well as to manufacture small containers for daily use. At the same time, technological improvements are accompanied by a noticeable drop in the quality of the pottery, with common use of relatively coarse and low-fired red, reddish-brown and brown wares.



11. General view of EB IIIB layers of destruction outside the EB II-III Main City-Wall: F.814 (between the EB II-III Main City-Wall and Outer Wall W.155), F.816 (between Outer Wall W.155 and Scarp-Wall W.165), F.818 (outside Scarp-Wall W.165), from west.

¹⁸ Buildings B1 +B3, then named Palace B, were excavated in years 2010-2012, resulting in the discovery of more than 100 complete vessels of EB IIIB date; these will be published separately (for a preliminary discussion see Nigro this volume; Nigro 2010a: 67-110).

ately (for a preliminary discussion see Nigro this volume; Nigro 2010a: 67-110).

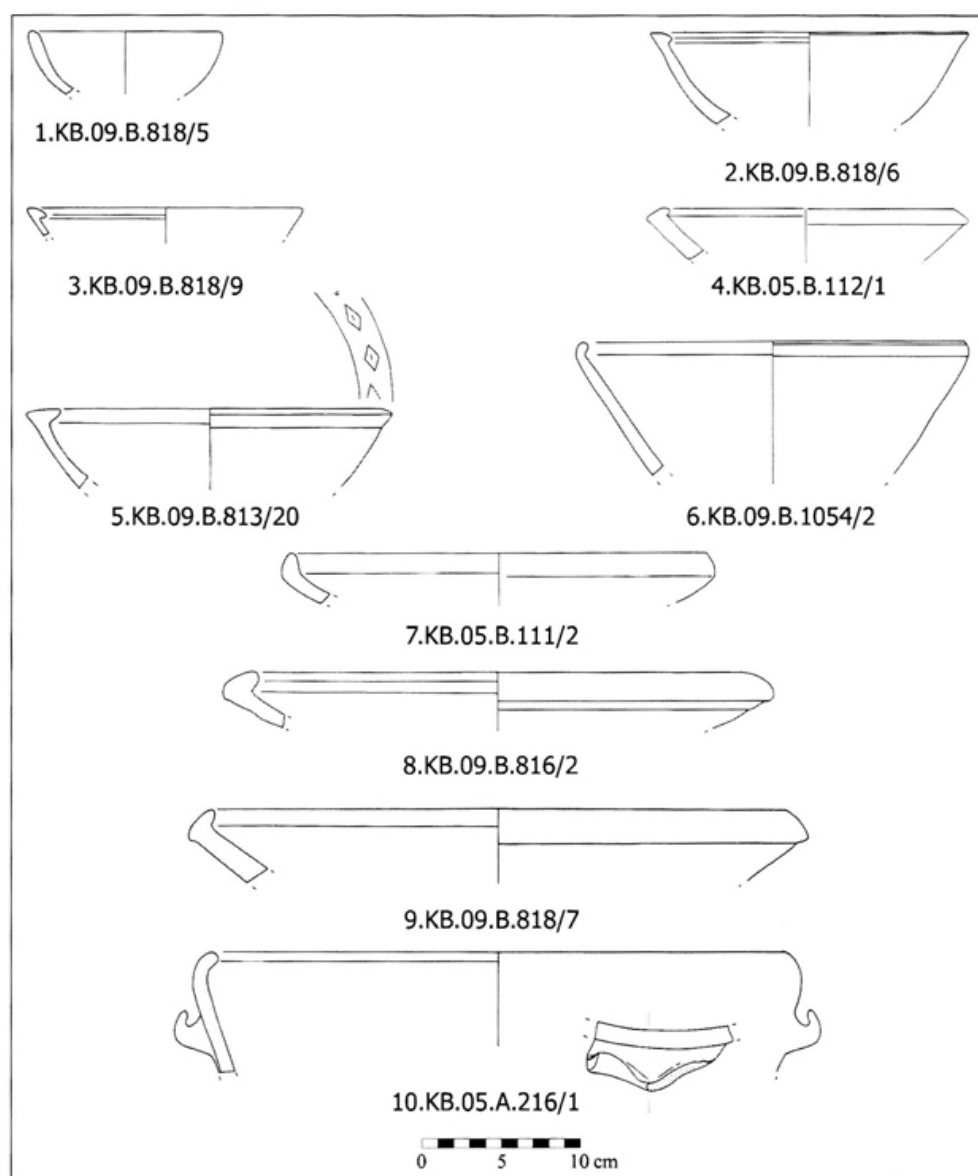
Specialised production (such as Khirbet Kerak ware or simple painted ware) disappear or become rare, although red-burnished specimens still exhibit a high level of refinement and represent the main luxury production of this period.

The Batrāwī IIIb pottery repertoire finds most of its comparisons in the EB IIIB layers of northern Palestinian and Transjordanian sites, mainly Khirbat az-Zayraqūn ("späten Horizont", that is "Letztbenutzungsphase"; Genz 2002: 120) and Khirbet Kerak (late period D; Greenberg *et al.* 2006: figs 2.40, 3.24-3.25, 5.91-5.95, 7.43, 8.100-8.107), but also Pella (latest horizon; Bourke 2000: figs 13.2-13.6) and Beth Shan (stratum XI / phase R7a; Mazar *et al.* 2000: fig. 14.6).

It also finds parallels at central and southern

sites, such as et-Tell (phases VII - VIII; Callaway 1972: 298-299, 307-329, 1980: 191-244), Tall es-Sultan (phase Sultan IIIc2), Khirbet Yarmouk (strata A6 - A7 in Area A, BII - BI in Area B, CII - CI in Area C, D7 - D8 in Area D, E4 in Area E, GIII - GII in Area G; de Miroschedji *et al.* 1988: 80-84, pls 41-45, 2000: tab. 18.1, figs 18.5-18.10), Tell Beit Mirsim (phase J; Albright 1933; Dever and Richard 1977), Tall al-Ḥandaqūq South (Chesson 2000), Tall al-'Umayri (IP 19; field D, phase 4; Harrison 1997; Herr 2000: fig. 2.3) and Bāb adh-Dhrā' (stratum II).

In the plain ware repertoire, hemispherical bowls (FIG. 12:1) and bowls with straight sides and in-turned or in-turned flattened rims (FIG. 12:4 - 12:5)¹⁹ are still commonly produced, together with



12. EB IIIB Simple Ware vessels.

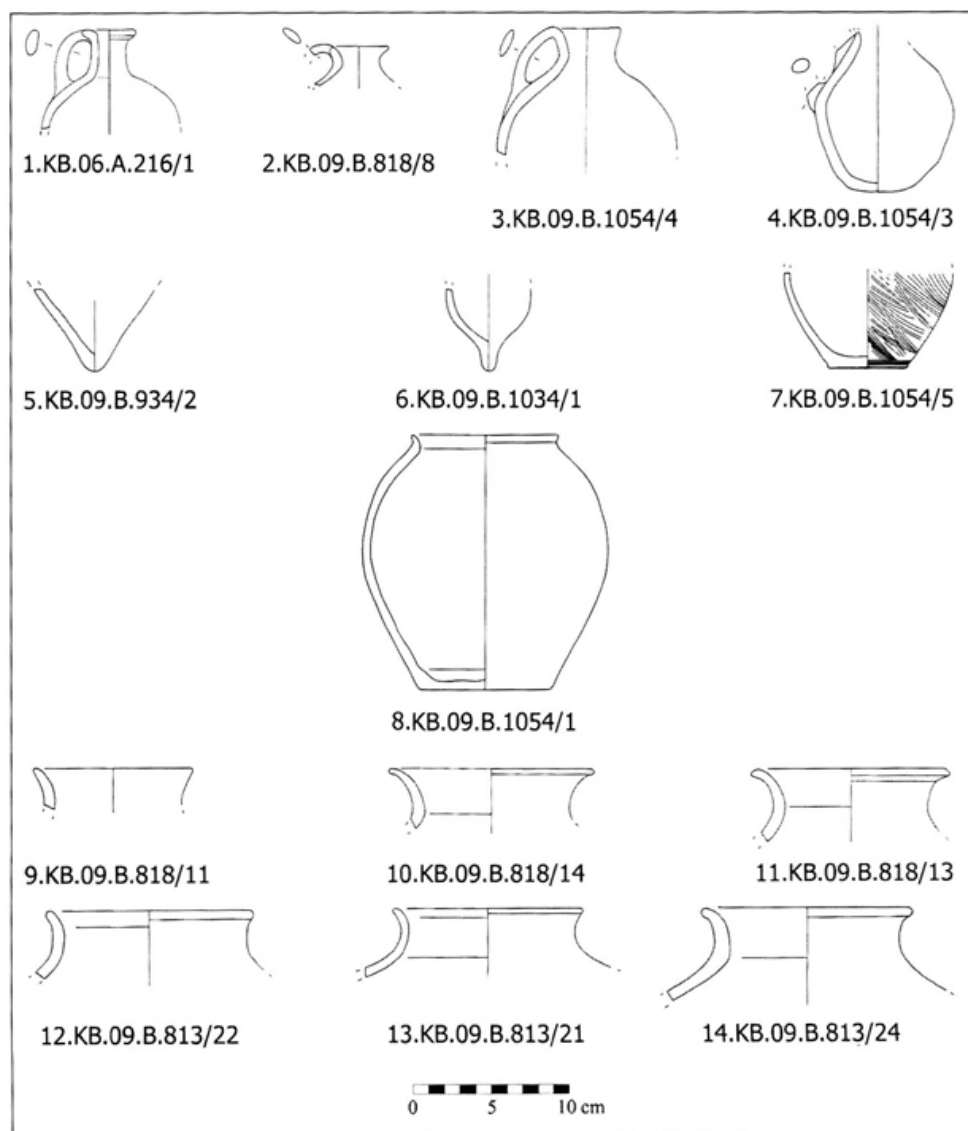
¹⁹ For comparisons see Khirbat az-Zayraqūn (Genz 2002: pl. 13), et-Tell (stratum VII; Callaway 1972: fig. 68:3, 6, 1980: figs 123:1-2, 4, 124:5, 126:1, 5, 7, 18, 128:12, 14, 16, 18, 130:1-

4, 8-15), Tell ed-Duweir (Tufnell 1958: pl. 59:148, 62:276, 63:308-310, 64:346, 351) and Tall al-'Umayri (Harrison 1997: figs 5.28:18, 5.29:4, 7-8, 12, 5.30:3).

deep bowls with oblique walls and in-turned rounded rims (FIG. 12:6)²⁰, and platters / bowls with up-right or in-turned rims (FIG. 12:7 - 12:9)²¹. Bowls with sharply inverted / pushed-down rims (FIG. 12:2 - 12:3) are however a diagnostic shape of late EB III, as attested to at Tall al-'Umayrī (Harrison 2000a: 349-351, fig. 19.2:16-17), Khirbet Yarmouk (Miroschedji *et al.* 1988: 81, pl. 42:6, 8; de Miroschedji 2000: fig. 18.5:8), Tell ed-Duweir (Tufnell 1958: pls 63:10, 65:373), et-Tell (stratum VII; Callaway 1972: fig. 80:4, 1980: fig. 127:13, 15, 23, 129:2, 4), Tall es-Sultan (Garstang 1932: pl. I:5; Kenyon and Holland 1982: fig. 52:20) and Tell Beit Mirsim (Albright 1933: pl. 1:9; Dever and Richard 1977: 3, pl. 1:6). Medium and large vats with flat bases, straight oblique walls, in-turned rims and ledge handles are also present (FIG. 12:10), as

at Tall es-Sultan (Kenyon and Holland 1982: fig. 71:1) and Tell Beit Mirsim (Albright 1933: pl. 1:4).

Several types of jugs and juglets are found, with both piriform and globular bodies (FIG. 13:1 - 13:4). Juglets with globular bodies, vertical necks and everted rims are quite common (FIG. 13:1), with striking comparisons at Tall es-Sultan (Garstang 1932: pl. II:17-20). Pronounced pointed or spike-based juglets (FIG. 13:5 - 13:6) are a diagnostic late EB III type (see Dever and Richard 1977: 7, 10; Mazar *et al.* 2000: 267). At Beth Shan, Tell ed-Duweir, Tall es-Sultan and et-Tell, for example, stump and pointed bases appear as early as EB II and continue into EB IIIA, but pronounced pointed or spike-bases only appear in EB IIIB. Juglet KB.09.B.1034/1 has numerous parallels from Beth Shan (Mazar *et al.* 2000: fig. 14.6:12), Tall es-



13. EB IIIB Simple Ware vessels.

²⁰ For comparisons see Tall es-Sultan: Kenyon 1960: fig. 57:4; Kenyon and Holland 1982: fig. 55:35-37.

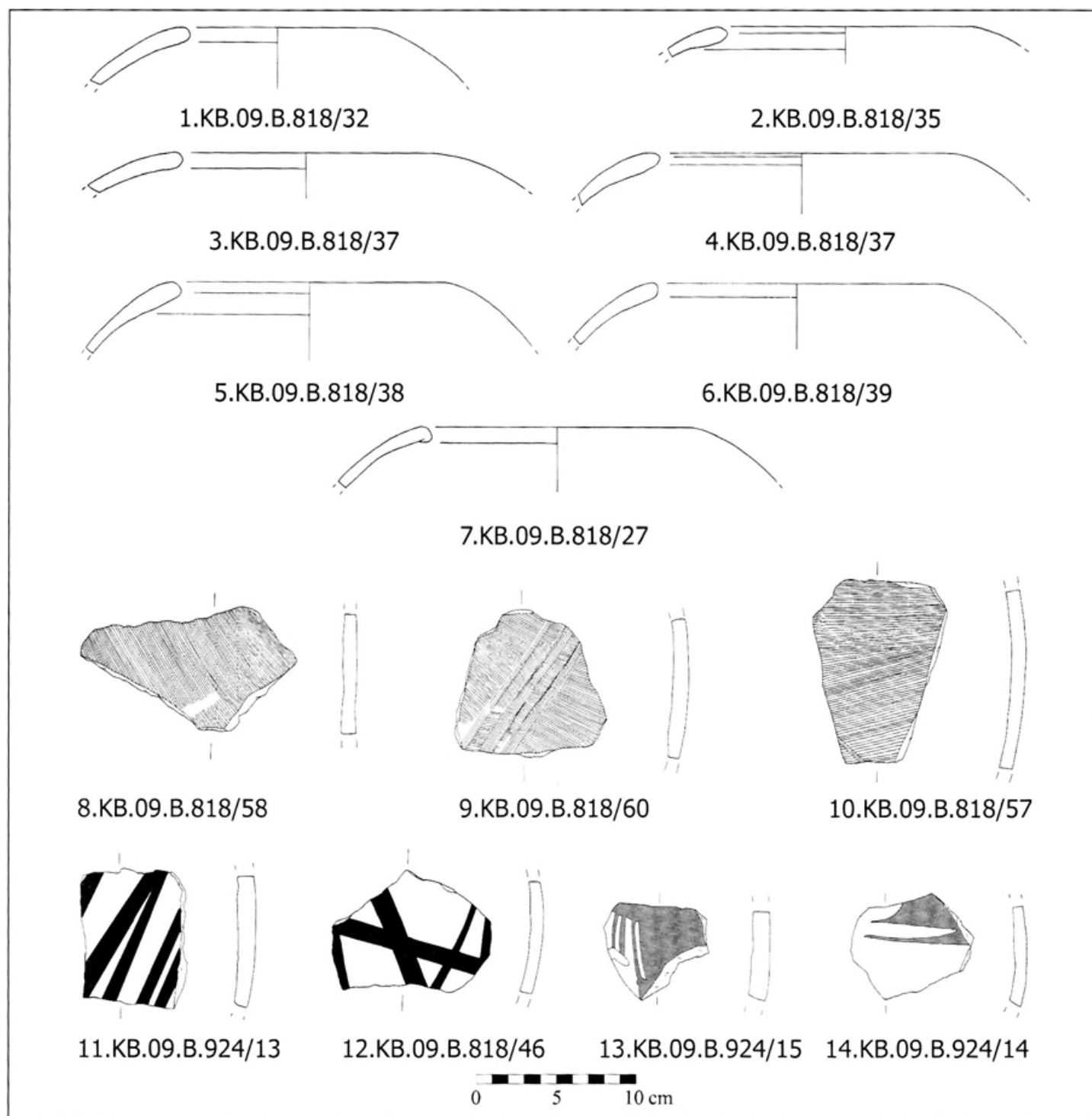
²¹ For comparisons see et-Tell (strata VII - VIII; Callaway 1972: figs. 68:1, 75:2-6, 1980: figs 126:2, 6, 8-16, 128:21, 129:22).

Sultan (Garstang 1932: pls I:2, II:17-20; Kenyon 1960: figs 35:35-38, 37:48, 39:10-11, 46:59, 52:53-55, 68:19, here mainly in red- or black-burnished ware) and Tell ed-Duweir (Tufnell 1958: pls 59:159, 61:247). Juglet KB.09.B.934/2 has parallels at Tell ed-Duweir (Tufnell 1958: pl. 60:211-212) and Tall es-Sultan (Garstang 1932: pl. II:12, 16).

Small and medium size jars with flaring necks and a variety of everted rims are also widespread

(FIG. 13:8 - 13:14), as in contemporary EB IIIB layers at et-Tell (stratum VII; Callaway 1980: fig. 131:1-22).

With regard to cooking ware, hole-mouth pots with swollen rounded, flattened or sometimes in-turned rims still represent the main vessel of this functional class. However, flattened recessed rims also appear (FIG. 14:1 - 14:7), apparently as a typical trait / development of the local Jordanian hori-



14. EB IIIB hole-mouth pots, and samples of Grain Wash and combed decorations.

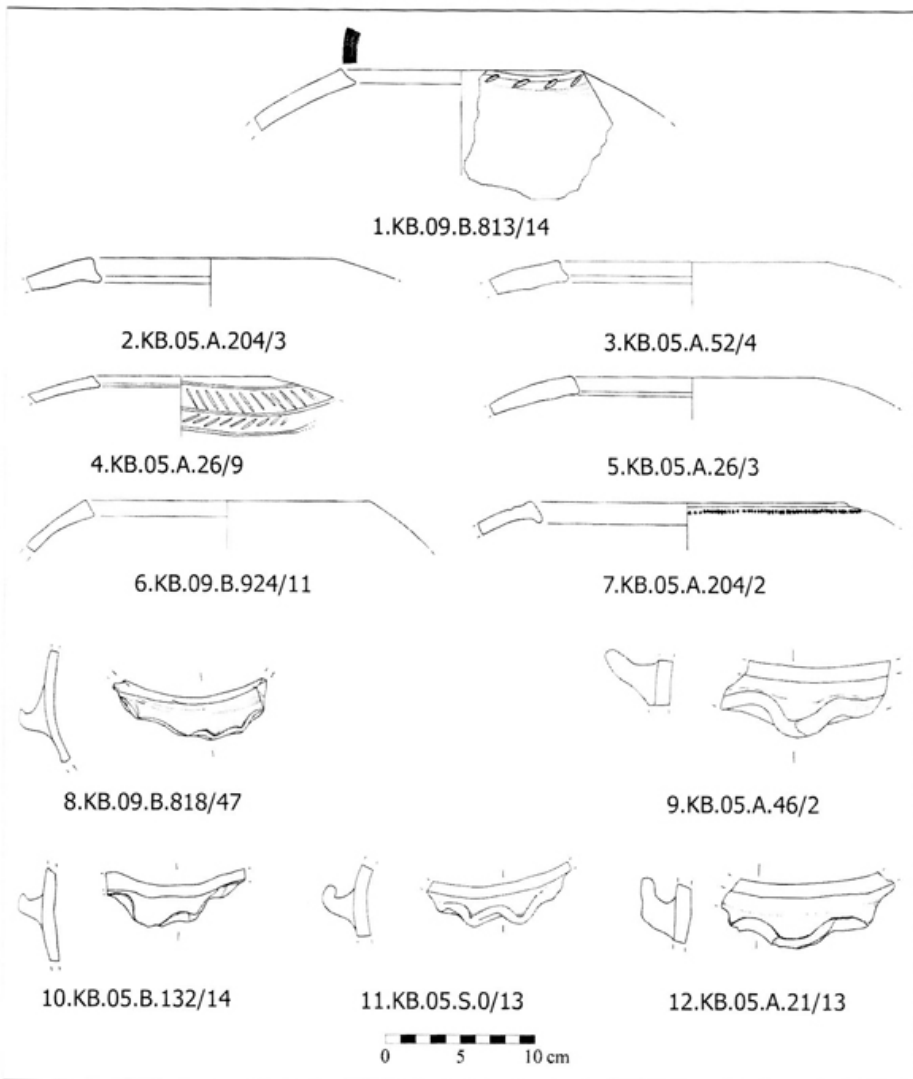
zon (where they continue into EB IV)²².

Storage ware continues to be dominated by the three broad morphological and functional container classes of the preceding EB II - IIIA periods. Ovoid-shaped hole-mouth jars for short-term storage are still the most common domestic storage container (FIG. 15:1 - 15:7). They typically have swollen flattened or rounded rims, but flattened recessed / concave rims and hammered rims also appear and become a hallmark of the Batrāwī IIIb period, as at Tall al-'Umayrī (Harrison 2000a: 355,

fig. 19.6:4-7)²³. Flattened recessed rims, in particular, persist and become a marker of the later EB IVB repertoire at the site (Sala 2006: 104-106, fig. 3.56).

Transport jars with ovoid bodies, flaring necks, everted rims and vertical handles are also present, but they are mainly produced in a local metallic ware (see below), often with an outer horizontal and vertical combing (FIG. 14:8 - 14:10).

Finally, many large *pithoi* for long-term storage



15. EB IIIB Storage Ware.

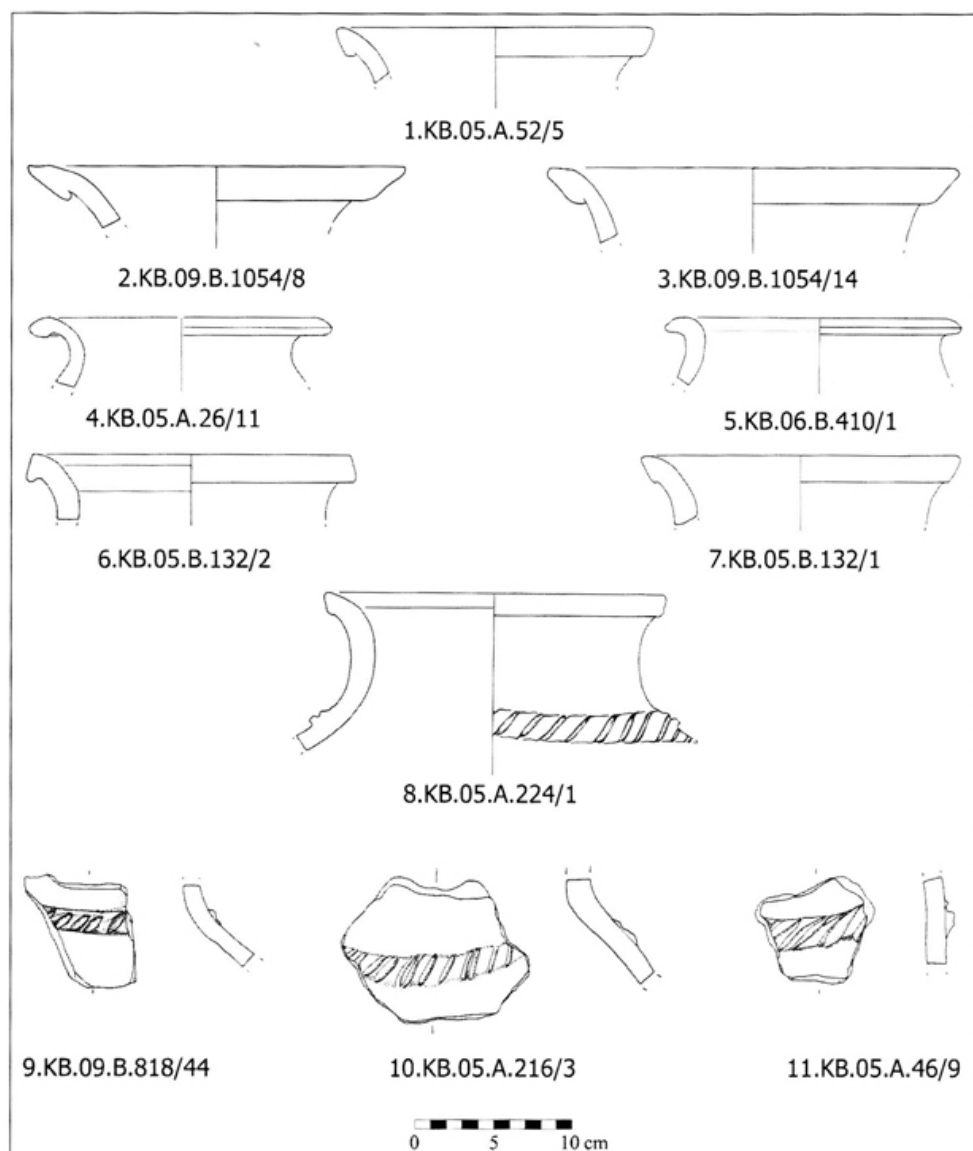
²² For comparisons see Khirbat az-Zayraqūn (Genz 2002: pls 9:12, 11:4, 16:5, 18:9-11, 129:3) and Bāb adh-Dhrā' (Rast and Schaub 2003: pls 50:8, 62:18, 70:2).

²³ These find comparisons in contemporary EB IIIB Palestinian and, above all, Jordanian sites. For the hammered rims see: Tall al-'Umayrī (Harrison 1997: fig. 5.15:26-28, 2000a: fig. 19.6:4-7), Khirbat az-Zayraqūn (Genz 2002: pls 18:12, 43:9, 50:8, 128:5), Beth Shan (Mazar *et al.* 2000: fig. 14.6:6), Tell ed-Duweir (Tufnell 1958: pls 57:62, 63:333) and Tell es-Sultan (Kenyon and

Holland 1983: fig. 155:1). For the flattened recessed (sometimes inner expended) rims see: Khirbat az-Zayraqūn (Genz 2002: pls 43:8, 50:5, 63:2, 77:4, 102:9, 107:5, 121:2), Beth Shan (Mazar *et al.* 2000: fig. 14.6:7) and Tall al-'Umayrī (Harrison 1997: figs 5.15:9, 11-18, 20, 5.16:7-8, 12, 14). The outer notched decoration of hole-mouth jar KB.05.A.26/9 finds a striking comparison in a specimen from Tall es-Sultan (Kenyon and Holland 1982: fig. 100:10).

were recovered from EB IIIB public storage buildings and installations excavated on the acropolis and in Area B South, inside the EB II - III main city-wall. These huge containers have a narrow flat base, elongated ovoid body and a flaring neck (FIG 18). They are characterised by rope-like decoration, always applied to the middle of the body and at the base of the neck in order to hide the joins between the different parts of the vessel. The rope decoration at the base of the neck often exhibits stick impressions (FIG. 16:8 - 16:11)²⁴, while the rope decoration on the middle of the body is usually represented by a plain raised band (FIG. 18), as in specimens from EB IIIB layers at Khirbet

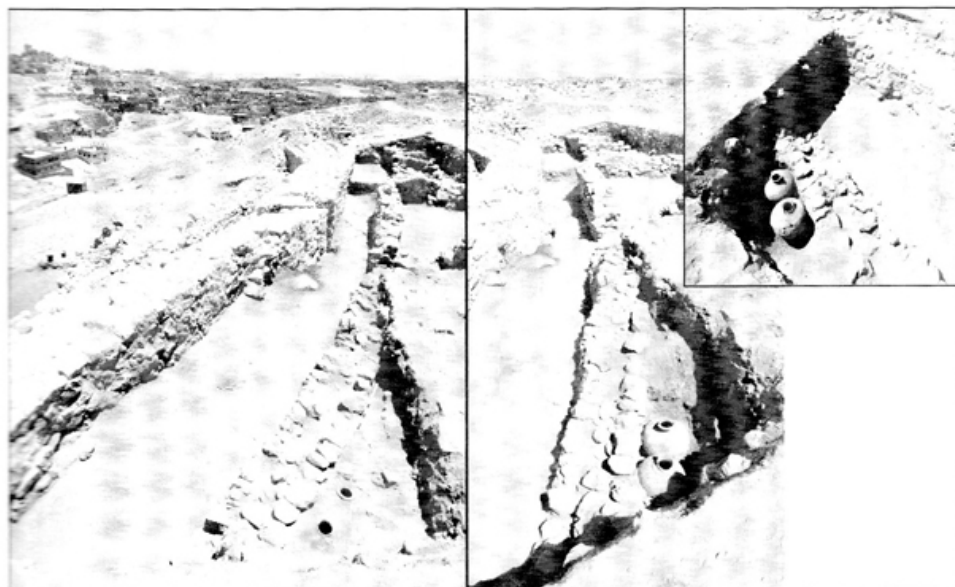
Yarmouk (de Miroschedji 2000: fig. 18.6:10), Tall al-'Umayrī (Harrison 1997: figs 5.20:1, 5.21-5.22, 2000a: fig. 19.5) and Tell ed-Duweir (Tufnell 1958: pl. 62:302)²⁵. Two complete *pithoi*, which typify this functional class of Batrawī IIIB storage ware, were found in building B3 at the end of the 2009 season (FIGS 17 - 18). They find comparisons (in terms of size, morphology and capacity) in *pithoi* recovered from contemporary EB IIIB contexts at Khirbat az-Zayraqūn (see Genz 2002: pls 26, 33). Batrawī IIIB *pithoi* display a different range of rims. Everted outer-folded, sometimes slightly ridged, rims continue from the previous Batrawī IIIa phase and, together with sharply everted outer-



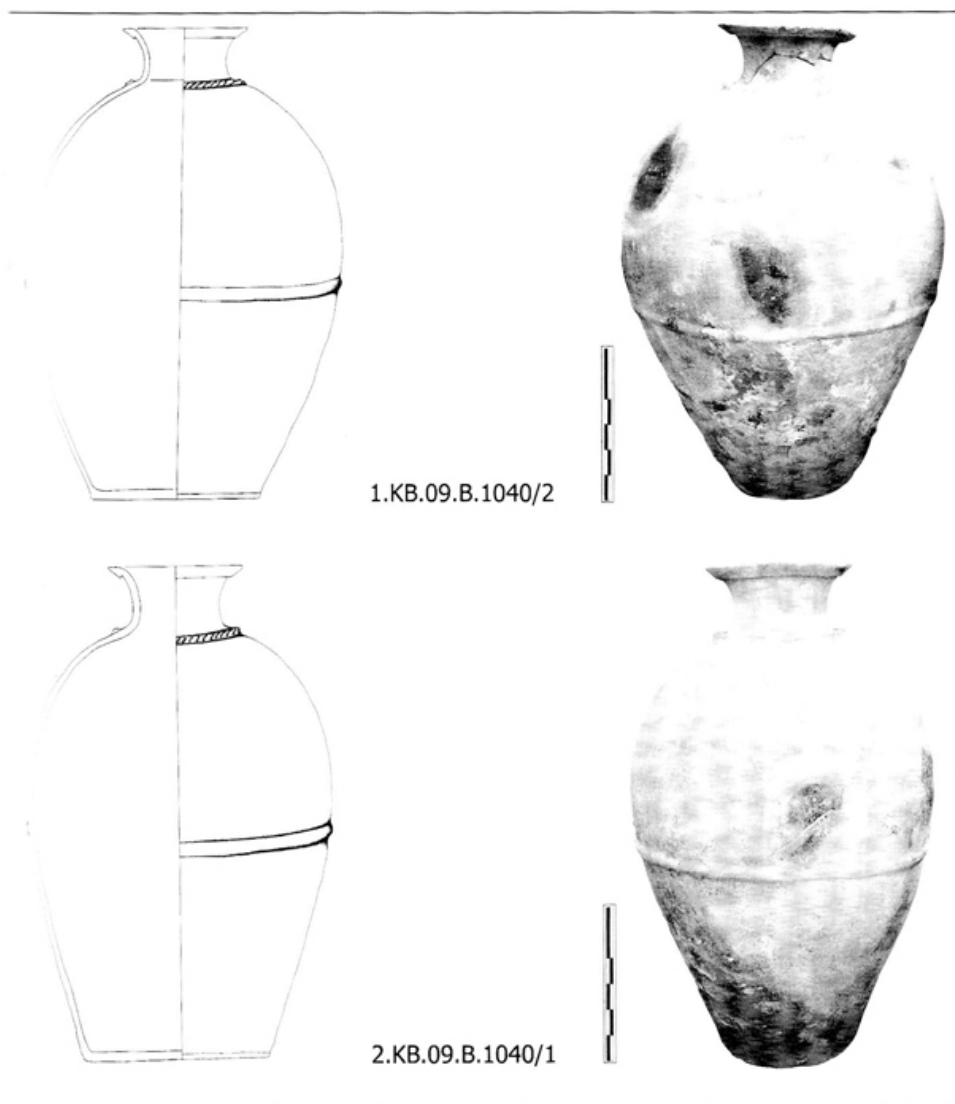
16. EB IIIB *pithoi*.

²⁴ Comparisons for this type of rope decoration can be found at contemporary Khirbat az-Zayraqūn (Genz 2002: pls 25:3, 26, 31:2, 36:1, 37, 84, 87, 98), Khirbet Kerak (Greenberg *et al.* 2006, fig. 5.88:13), Tall al-'Umayrī (Daviau 1991: fig. 6.40:20; Harrison 2000a: fig. 19.5) and Tall es-Sultan (Kenyon and Holland 1983: fig. 157:7).

²⁵ A type of modelled rope decoration is sometimes also applied around the girth of the body, as in specimens KB.06.A.220/5+6 and KB.05.A.204/14b (FIG. 19:1 - 19:2) or specimens KB.06.A.220/1, KB.06.A.220/2 and KB.06.A.220/3 (FIG. 19:3 - 19.5). The latter finds comparisons at Bāb adh Dhārā' (Rast and Schaub 2003: pls 63:34, 64:7, 66:16).



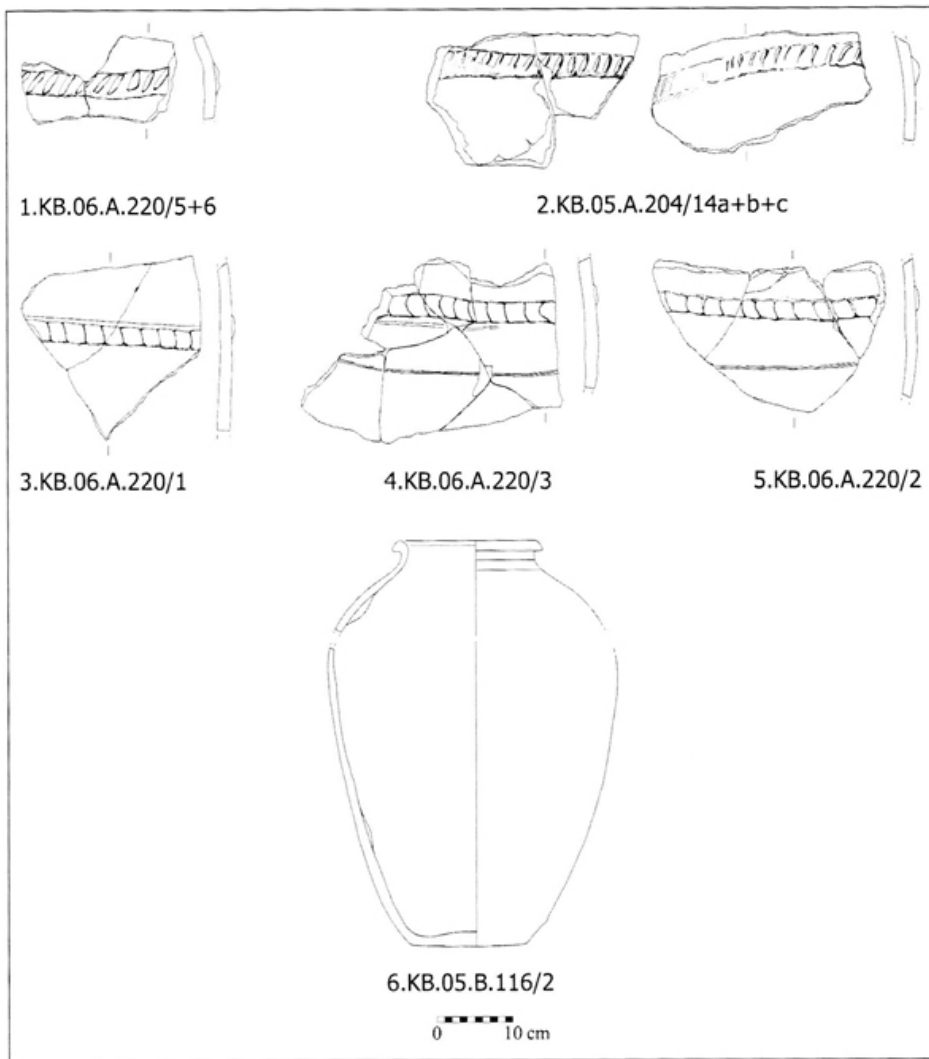
17. General view of EB IIIB buildings inside the EB II-III Main City-Wall, with *pithoi* still *in situ* along the northern wall of Building B3, from west (2009).



18. EB IIIB *pithoi* from Building B3.

folded rims (FIGS 18, 16:1 - 16:3), become a hallmark of the period as in EB IIIB contexts at Khirbat az-Zayraqūn (Genz 2002: pls 11:13, 17:8, 37,

65:3, 77:6), et-Tell (Callaway 1980: fig. 132:10, 12, 15), Tall al-Ḥandaqūq South (Chesson 2000: fig. 20.3:11) and Tall al-‘Umayrī (Harrison 1997:



19 EB IIIB Storage Ware.

fig. 5.19:12-22, 26-27). Sharply out-flaring rims, with rounded or pointed edges, appear for the first time and become a hallmark of the Batrāwī IIIB repertoire (FIG. 16:4 - 16:5), as in EB IIIB contexts at Khirbat az-Zayraqūn (Genz 2002: pls 11:13, 23:6, 36), Tall al-Ḥandaqūq South (Chesson 2000: fig. 20.3:12), Tall al-'Umayrī (Daviau 1991: fig. 6.40:20; Harrison 1997: fig. 5.22, 2000a: 353, fig. 19.5), Tell ed-Duweir (Tufnell 1958: pls 62:282-283, 291-292, 294, 297), Khirbet Kerak (Greenberg *et al.* 2006: fig. 7.38:10), et-Tell (Callaway 1972: figs 61:21-22, 67:8, 1980: figs 132:2-3, 11, 13, 141:9, 13) and Tell Beit Mirsim (stratum J; Dever and Richard 1977: 10, fig. 2:12) where it is said that this rim is typical of the large *pithoi* known from late EB III contexts. Finally, everted squared rims and everted triangular rims are also present (FIG. 16:6 - 16:8), as in contemporary layers at

Khirbat az-Zayraqūn (Genz 2002: pls 86, 96:5).

'Grain-wash' decoration (FIG. 14:11 - 14:12), now also in a 'smeared wash' variant in white or red (FIG. 14:13 - 14:14; also known from a number of Khirbat az-Zayraqūn specimens [so-called "breite Streifen" decoration; Genz 2002: pls 28, 30, 33, 86, 97, 108:3, 153:d, 155:b-c] and Khirbet Kerak [Greenberg *et al.* 2006: figs 8.78:3-4, 8.80:4])²⁶, is still used to finish the surface of storage containers - mainly *pithoi* - but also large and medium-large jars. A thick lime 'white-coating' is sometimes also used as an outer finish on storage containers.

Olive oil continued to be transported and stored in local metallic pattern-combed jars (a type which spreads all over the Levant in the mid-3rd millennium BC; Mazzoni 1987), with loop handles and flaring neck (according to a type well-known from, for example, Khirbat az-Zayraqūn [Genz 2002: pls

²⁶ Classic 'grain-wash' decoration is still used (FIG. 14:13 - 17:14), being common at both Khirbat az-Zayraqūn (mainly on *pithoi*;

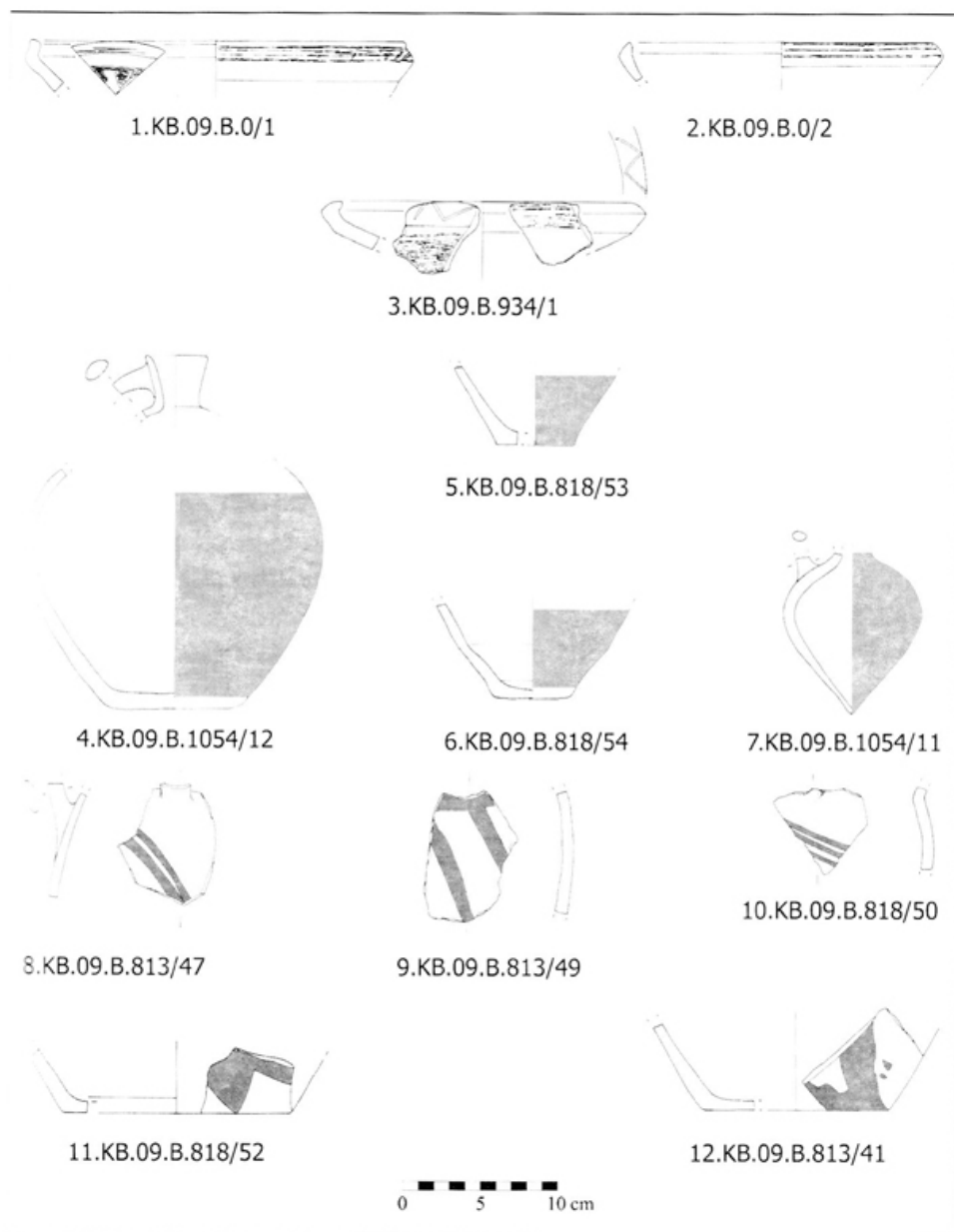
Genz 2002: 35, pls 35:3, 62, 76:2, 87, 154:d-e) and Khirbet Kerak (Greenberg *et al.* 2006: fig. 2.40).

5:1-2, 25:1, 29:1-2, 4, 32:1, 3-4, 34:3, 56, 61:2, 70:5, 83:1, 3, 95, 108:4, 113:2, 131:1] and Khirbet Kerak [Greenberg *et al.* 2006: figs 8.69:5, 8.80:7]). Fragments of metallic pattern-combed jars collected with the help of DoA representative Romil Ghayib during a 2007 survey suggest that this class of metallic combed jar was used to transport olive oil into the town from farms in the hilly countryside west of Batrāwī (Nigro 2009a: 669-670, 2010b:440-441).

As noted above, the move towards standardisation was accompanied by a general decline in the quality of ordinary pottery production and, conse-

quently, a reduction in the representation of some fine wares.

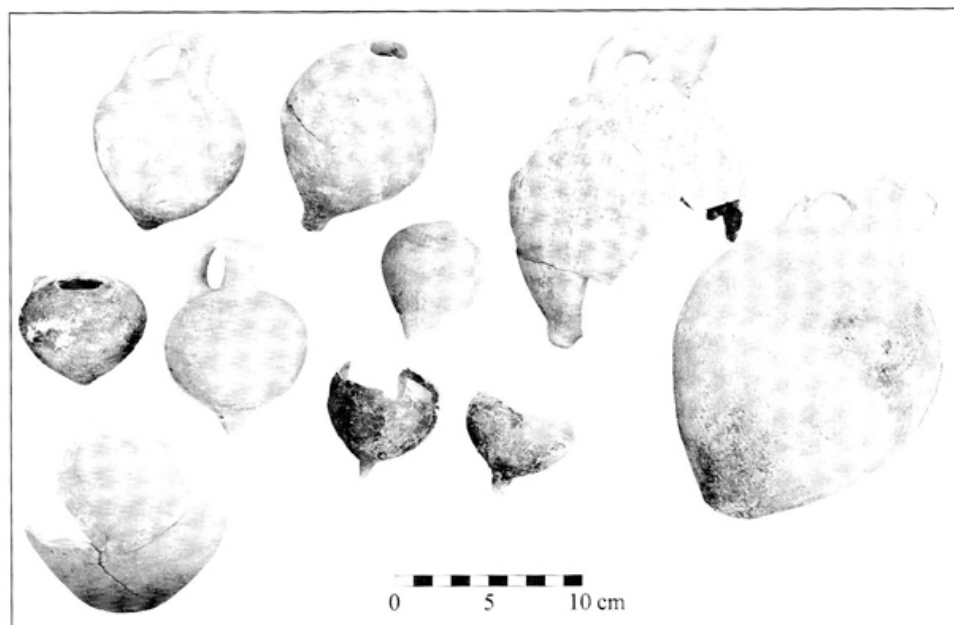
Simple painted ware is still present but in vastly reduced frequencies, following a general trend which witnessed the progressive disappearance of painted decoration in Palestinian pottery repertoires during the transition from EB IIIA to EB IIIB²⁷. A decoration of painted red / reddish-brown oblique or crossing narrow lines is sometimes applied to jugs and small jars (FIG. 20:8 - 20:10). A painted decoration with larger, more irregular bands (occasionally in a sort of 'smeared wash' variant) is also present, mainly on jars and medium-large



20 EB IIIB) specialized productions: Simple Painted and Red Bur-nished/Polished Wares.

²⁷ This trend appears to be documented at Khirbet Kerak in the transition from early period D (EB IIIA) to late period D (EB IIIB), at Tall es-Sultan in the transition from phase Sultan IIIb1

(EB IIIA) to phase Sultan IIIb2 (EB IIIB) and at Tall al-'Umayrī in the transition from phase 6B to phase 6A (Daviau 1991).



21 EB IIIB Red Burnished/Polished jugs and juglets from destruction layer F.1054, excavated inside EB IIIB Building B3.

containers (FIG. 20:11 - 20:12). It can be associated with the painted decoration known at Khirbat az-Zayraqūn as “unregelmäßige Streifenbemalung, breite Bänder” (Genz 2002: 32).

Red-burnished and polished wares represent the main specialised and luxury production of the Batrāwī IIIB phase, with a repertoire of bowls and platters with upright or in-turned pointed rims (FIG. 20:2-3), the latter being typical of the EB III period (as at Khirbat az-Zayraqūn [Genz 2002: pls 14:13, 38:3, 53:1, 58:10, 65:14, 77:3, 8, 102:1, 111:4, 112:12, 114:5, 1118:13-14, 127:5] and Tall es-Sultan [Kenyon and Holland 1982: fig. 50:6-10]). Red-burnished platters with upright / slightly in-turned elongated squared rims are also a marker of late EB III period (FIG. 20:1), as at EB IIIB Khirbat az-Zayraqūn (Genz 2002: pl. 1:3) and Tell Beit Mirsim (stratum J; Dever and Richard 1977: fig. 1:4). A variety of jugs and juglets is also present (FIG. 20: 4 - 20: 7), amongst which red- or black-burnished juglets with globular bodies and pronounced pointed bases (FIG. 20:7) typify the period (FIG. 21). They are also typical of late EB III assemblages at other well-stratified sites, including Beth Shan (Mazar *et al.* 2000: 267), Tell ed-Duweir (Tufnell 1958: pls 59:159, 164, 60:210-212, 61:247), Tall es-Sultan (Garstang 1932: pl. II:19-20; Kenyon 1960: figs 35:35-38, 37:48, 39:10-11, 52:52-55, 61:30, 68:19) and Tall al-‘Umayrī (Daviau 1991: fig. 6.41:26). In general, the use of red-burnished and, especially, pattern-burnished slips becomes more common, with the vessels of this class having a finer finish than ever before.

The ongoing study of the assemblage of more than 100 complete EB IIIB vessels recovered from the western pavilion of the palace of the ancient town in 2010 (Nigro 2010a: 67-110) will undoubtedly shed further light on the EB II - III pottery sequence of Khirbat al-Batrāwī, making it a key site in the context of the northern Palestinian and Jordanian ceramic horizon.

Acknowledgements

I wish to thank Prof. Lorenzo Nigro, Director of the ‘Rome “La Sapienza” Expedition to Palestine and Jordan’ for allowing me to study and present the EB II - III pottery from Khirbat al-Batrāwī.

My deepest thanks are to former Director-Generals of the Department of Antiquities of Jordan, the late Dr Fawwaz al-Khraysheh and Dr Ziad al-Saad, to the Head of Excavations, Dr Khalil Hamdan, and to all personnel of the Department of Antiquities for their ongoing support. Particular thanks are due to Department of Antiquities representatives Romil Ghayib and Ahmed Shorma, and to the personnel of the Zarqā’ office for their effective co-operation in the field.

Bibliography

- Albright, W.F. 1933. The Excavation of Tell Beit Mirsim. IA: The Bronze Age Pottery of the Fourth Campaign. *ASOR* 12: 55-127.
- Amiran, R. 1969. *Ancient Pottery of the Holy Land from its beginning in the Neolithic Period to the end of the Iron Age*. Jerusalem: Massada Press.
- Amiran, R. et al. 1978. Early Arad. *The Chalcolithic*

- Settlement and Early Bronze City. I. First - Fifth Seasons of Excavations, 1962-1966* (Judean Desert Studies). Jerusalem: The Israel Exploration Society.
- Ben-Tor, A. et al. 2003. *Tel Qashish. A village in the Jezreel Valley. Final Report of the Archaeological Excavations (1978-1987)* (Qedem Reports 5). Jerusalem: The Hebrew University of Jerusalem.
- Bourke, S.J. 2000. Pella in the Early Bronze Age. Pp. 233-253 in G. Philip and D. Baird (eds.), *Ceramic and Change in the Early Bronze Age of the Southern Levant*, (Levantine Archaeology 2). Sheffield: Sheffield Academic Press.
- Callaway, J.A. 1964. *Pottery from the Tombs at Ai (et-Tell)*. London: Bernard Quaritch Ltd.
- 1972. *The Early Bronze Age Sanctuary at Ai (et-Tell)*. A Report of the Joint Archaeological Expedition to Ai (et-Tell) No. I. (Colt Archaeological Institute Publications). London: Bernard Quaritch Ltd.
- 1980. *The Early Bronze Age Citadel and Lower City at Ai (et-Tell)*. Report of the Joint Archaeological Expedition to Ai (et-Tell), No. II. (ASOR Excavation Reports). Cambridge Mass: American School of Oriental Research.
- Charloux, G. 2006. La céramique aux lignes peintes Étude d'un fossile directeur de l'âge du Bronze ancien au Levant sud. *Bulletin du Centre de Recherche Français de Jérusalem* 17: 13-40.
- Chesson, M.S. 2000. Ceramics and Daily Life in the EBA Household: Form, Function and Action in Residential Compounds at Tell el-Handaqq South, Jordan. Pp. 365-378 in G. Philip and D. Baird (eds.), *Ceramic and Change in the Early Bronze Age of the Southern Levant* (Levantine Archaeology 2). Sheffield: Sheffield Academic Press.
- Chesson, M.S. et al. 1995. Tell es-Sukhne North: An Early Bronze Age II Site in Jordan. *Paléorient* 21/1:113-123.
- Daviau, P.M.M. 1991. Field D: The Lower Southern Terrace. Pp. 87-155 in L.G. Herr, L.T. Geraty, Ø.S. LaBianca and R.W. Younker (eds.), *Madaba Plains Project 2: The 1987 Season at Tell el-'Umeiri and Vicinity and Subsequent Studies*. Berrien Springs, MI: Andrews University Press.
- Dever, W.G. and Richard, S. 1977. A Reevaluation of Tell Beit Mirsim Stratum J. *BASOR* 226: 1-14.
- Esse, D.L. 1991. *Subsistence, Trade and Social Change in Early Bronze Age Palestine* (Studies in Ancient Oriental Civilizations 50). Chicago: The University of Chicago Press.
- Fargo, V.M. 1979. Early Bronze Age Pottery at Tell el-Hesi. *BASOR* 236: 23-40.
- Fisher, P.M. 2000. The Early Bronze Age at Tell Abu al-Kharaz, Jordan Valley: A Study of Pottery Typology and Provenance, Radiocarbon Dates, and Synchronization of Palestine and Egypt During Dynasty 0-2. Pp. 201-232 in G. Philip and D. Baird (eds.), *Ceramic and Change in the Early Bronze Age of the Southern Levant* (Levantine Archaeology 2). Sheffield: Sheffield Academic Press.
- 2008. *Tell Abu al-Kharaz in the Jordan Valley. Volume I: The Early Bronze Age* (Österreichische Akademie der Wissenschaften, Denkschriften der Gesamtakademie, Band XLVIII). Wien: Verlag der Österreichische Akademie der Wissenschaften.
- Fitzgerald, G.M. 1935. Beth Shan: Earliest Pottery. *The Museum Journal* 24: 5-32.
- Garstang, J. et al. 1932. Jericho: City and Necropolis. *Liverpool Annals of Archaeology and Anthropology* 19: 3-22, 35-54.
- 1935. Jericho: City and Necropolis (Fifth Report). *Liverpool Annals of Archaeology and Anthropology* 22: 143-184.
- 1936. Jericho: City and Necropolis (Report for the Sixth and Concluding Season, 1936). *Liverpool Annals of Archaeology and Anthropology* 23: 67-100.
- Getzov, N. 2006. *The Tel Bet Yerah Excavations 1994-1995* (Israel Antiquities Authority Reports 28). Jerusalem: Israel Antiquities Authority.
- Genz, H. 2000. Grain wash Decoration in Early Bronze Age III The Evidence from Khirbet ez-Zeraqon. Pp. 279-286 in G. Philip and D. Baird (eds.), *Ceramic and Change in the Early Bronze Age of the Southern Levant* (Levantine Archaeology 2). Sheffield: Sheffield Academic Press.
- 2002. *Die frühbronzezeitliche Keramik von Khirbet ez-Zeraqon* (Abhandlungen des Deutschen Palästina-Vereins, Band 27,2). Wiesbaden: Harrassowitz.
- Golani, A. 2003. *Salvage Excavations at the Early Bronze Age Site of Qiryat Ata*. IAA Report 18, Jerusalem: Israel Antiquities Authority.
- Gophna, R. and Iron-Lubin, M. 1996. The Pottery Assemblage. Pp. 81-134 in R. Gophna (ed.), *Excavations at Tel Dalit. An Early Bronze Age Walled Town in Central Israel*. Tel Aviv: Ramot Pub. House.
- Greenberg, R. 1997. The Early Bronze Age Phases in Area L. Strata XXI-XIX. Pp. 183-193 in A. Ben-Tor and R. Bonfil (eds.), *Hazor V. An Account of the Fifth Season of Excavation, 1968*. Jerusalem: Israel Exploration Society and the Hebrew University of Jerusalem.
- 2000. Changes in Ceramic Production between Early Bronze Age II and III in Northern Israel, Ba-

- sed on Pottery of Tel Hazor and Tel Dan. Pp. 183-200 in G. Philip and D. Baird (eds.), *Ceramic and Change in the Early Bronze Age of the Southern Levant* (Levantine Archaeology 2). Sheffield: Sheffield Academic Press.
- 2001. Pottery of Stratum III, The Early Bronze Age II. Pp.133-138 in E. Eisenberg, A. Gopherand, and R. Greenberg (eds.), *Tel Te'o. A Neolithic, Chalcolithic, and Early Bronze Age Site in the Hula Valley* (IAA Reports 13). Jerusalem: Israel Antiquities Authority.
- 2006. What's Cooking in Early Bronze Age II. Pp. 7-23 in A.M. Maeir and P. de Miroschedji (eds.), "I Will Speak the Riddles of Ancient Times". Archaeological and Historical Studies in Honor of Amihai Mazar on the Occasion f His Sixtieth Birthday. Winona Lake, In.: Eisenbrauns.
- Greenberg, R. and Porat, N. 1996. A Third Millennium Levantine Pottery Production Center: Typology, Petrography, and Provenance of the Metallic Ware of Northern Israel and Adjacent Regions. *BASOR* 301: 5-24.
- Greenberg, R., Eisenberg, E., Paz, S. and Paz, Y. 2006. *Bet Yerah: The Early Bronze Age Mound I: Excavations Reports 1933-1986* (Israel Antiquities Authority Reports 29). Jerusalem: Israel Antiquities Authority.
- Harrison, T.P. 1997. Field D: The Lower Southern Terrace. Pp. 99-175 in L.G. Herr, L.T. Geraty, Ø.S. LaBianca, R.W. Younker and D.R. Clark (eds.), *Madaba Plains Project 3: The 1989 Season at Tell el-'Umeiri and Vicinity and Subsequent Studies*. Berrien Springs, MI: Andrews University Press.
- 2000a. The Early Bronze III Ceramic Horizon for Highland Central Jordan. Pp. 347-364 in G. Philip and D. Baird (eds.), *Ceramic and Change in the Early Bronze Age of the Southern Levant* (Levantine Archaeology 2). Sheffield: Sheffield Academic Press.
- 2000b. Field D: The Lower Southern Terrace. Pp. 95-154. in D.R. Clark, L.T. Geraty, L.G. Herr, Ø.S. LaBianca, R.W. Younker and D.R. Clark (eds.), *Madaba Plains Project 4: The 1992 Season at Tell el-'Umayri and Subsequent Studies*. Berrien Springs, MI: Andrews University Press.
- Herr, L.G. 2000. Excavation and Cumulative Results at Tall al-'Umaayri. Pp. 7-20 in D.R. Clark, L.T. Geraty, L.G. Herr, Ø.S. LaBianca, R.W. Younker and D.R. Clark (eds.), *Madaba Plains Project 4: The 1992 Season at Tell el-'Umayri and Subsequent Studies*. Berrien Springs, MI: Andrews University Press.
- Hennessy, J.B. 1967. *The Foreign Relations of Palestine during the Early Bronze Age* (Colt Archaeological Institute Publications). London: Bernard Quaritch Ltd.
- Ilan, O. 2001. Household Archaeology at Arad and at Ai in the Early Bronze Age II. Pp. 317-354 in S.R. Wolff (ed.), *Studies in the Archaeology of Israel and Neighboring Lands in Memory of Douglas L. Esse* (Studies in Ancient Oriental Civilizations 59). Chicago: The University of Chicago Press.
- Kenyon, K.M. 1960. *Excavations at Jericho. Volume One. The Tombs excavated in 1952-1954*. London: The British School of Archaeology in Jerusalem.
- Kenyon, K.M. and Holland, Th.A. 1982. *Excavations at Jericho. Volume Four. The Pottery Type Series and Others Finds*. London: The British School of Archaeology in Jerusalem.
- 1983. *Excavations at Jericho. Volume Five. The Pottery Phases of the Tell and Others Finds*. London: The British School of Archaeology in Jerusalem.
- Leonard, A.Jr. 1992. The Jordan Valley Survey, 1953: Some Unpublished Soundings Conducted by James Mellaart. *ASOR*: 50.
- London, G.A. 1988. The Organization of the Early Bronze II and III Ceramics Industry at Tel Yarmuth: A Preliminary Report. Pp. 117-124 in P. de Miroschedji et al.(eds.) *Yarmouth I, rapport sur les trios premieres campagnes de fouilles a Tel Yarmouth (Israel), 1980-1982*, 117-124. Paris: Editions Recherche sur les civilisations.
- Mabry, J. 1989. Investigations at Tell el-Handaquq, Jordan (1987-88). *ADAJ* 33: 59-95.
- Marchetti, N. and Nigro, L. (eds.) 2000. Excavations at Jericho, 1998. *Preliminary Report on the Second Season of Excavations and Surveys at Tell es-Sultan, Palestine*, (Quaderni di Gerico 2). Rome: Università degli Studi di Roma "La Sapienza".
- Mazar, A., Ziv-Esudri, A. and Cohen-Weinberger, A. 2000. The Early Bronze Age II-III at Tel Beth Shean: Preliminary Observations. Pp. 255-278 in G. Philip and D. Baird (eds.), *Ceramic and Change in the Early Bronze Age of the Southern Levant*, (Levantine Archaeology 2). Sheffield: Sheffield Academic Press.
- Mazzoni, S. 1987. The Diffusion of the Palestinian Combed Jars. Pp. 145-158 in S. Shaath (ed.), *Studies in the History and Archaeology of Palestine*, (Proceedings of the First International Symposium on Palestine Antiquities), Vol. II. Aleppo: ALECSO.
- de Miroschedji, P. 2000. An Early Bronze Age III Pot-

- tery Sequence for Southern Israel. Pp. 315-345 in G. Philip and D. Baird (eds.), *Ceramic and Change in the Early Bronze Age of the Southern Levant*. (Levantine Archaeology 2). Sheffield: Sheffield Academic Press.
- de Miroschedji, P. et al. 1988. *Yarmouth 1. Rapport sur les trois premières campagnes de fouilles à Tel Yarmouth (Israël)* (1980-1982), (Éditions Recherche sur les Civilisations, Mémoire 76). Paris: Éditions Recherche sur les Civilisations.
- Nigro, L. 2006. Preliminary Report of the First Season of Excavations by the University of Rome "La Sapienza" at Khirbat al-Batrāwī (Upper Wādī az-Zarqā'). *ADAJ* 50: 229-248.
- 2007. Preliminary Report of the Second Season of Excavations by the University of Rome "La Sapienza" at Khirbat al-Batrāwī (Upper Wādī az-Zarqā'). *ADAJ* 51: 345-360.
- 2009a. Khirbet al-Batrāwy: a Case Study of 3rd millennium BC Early Urbanism in North-Central Jordan. Pp. 657-677 in F. al-Khraysheh (ed.), *SHAJ* 10.
- 2009b. Khirbet Kerak Ware at Jericho and the EB III Change in Palestine. Pp. 69-83 in L. Petit and E. Kaptijn (eds.), *A timeless Vale. Archaeological and related essays on the Jordan Valley in honour of Gerrit van der Kooij on the occasion of his sixty-fifth birthday*, (Archaeological Studies Leiden University 19). Leiden: Leiden University Press.
- 2010a. *In the Palace of the Copper Axes/Nel Palazzo delle Asce di Rame. Khirbet al-Batrāwy: the discovery of a forgotten city of the III millennium BC in Jordan/Khirbet al-Batrāwy: la scoperta di una città dimenticata del III millennio a.C. in Giordania*, (Rome «La Sapienza» Studies on the Archaeology of Palestine & Transjordan, Colour Monographs I). Rome: Università degli Studi di Roma "La Sapienza".
- 2010b. Between the Desert and the Jordan: Early Urbanization in the Upper Wadi az-Zarqa - the EB II-III fortified town of Khirbet al-Batrāwy. Pp. 431-458, in P. Matthiae et al. (eds.), *6 ICAANE. Proceedings of the 6th International Congress of the Archaeology of the Ancient Near East*. Vol. 2, 5 May – 10 May 2008, "Sapienza", Università di Roma. Wiesbaden: Harrassowitz.
- Nigro, L. and Sala, M. 2009. Preliminary Report of the Fourth Season (2008) of Excavations by the University of Rome "La Sapienza" at Khirbat al-Batrāwī (Upper Wādī az-Zarqā'). *ADAJ* 53: 371-384.
- 2010. Preliminary Report on the Fifth Season (2009) of Excavations at Khirbat al-Batrāwī (Upper Wādī az-Zarqā'), by the University of Rome "La Sapienza". *ADAJ* 54: 237-253.
- Nigro, L. (ed.) 2006. *Khirbet al-Batrāwy. An Early Bronze Age Fortified Town in North-Central Jordan. Preliminary Report of the First Season of Excavations*, (2005) (Rome «La Sapienza» Studies on the Archaeology of Palestine & Transjordan, 3). Rome: Università degli Studi di Roma "La Sapienza".
- 2008. *Khirbet al-Batrāwy II. The EB II city-gate, the EB II-III fortifications, the EB II-III temple. Preliminary report of the second (2006) and third (2007) seasons of excavations*, (Rome «La Sapienza» Studies on the Archaeology of Palestine & Transjordan, 6). Rome: Università degli Studi di Roma "La Sapienza".
- 2012. *Khirbet al-Batrāwy III. The EB II-III triple fortification line and EB IIIB quarter inside the city-wall. Preliminary report of the fourth (2008) and fifth (2009) seasons of excavations* (Rome «La Sapienza» Studies on the Archaeology of Palestine & Transjordan, 8). Rome 2012.
- Palumbo, G. et al. 1996. The Wadi Az-Zarqa'/Wadi Adh-Dhulayl Excavations and Survey Project: Report on the October-November 1993 Fieldwork Season. *ADAJ* 40: 375-426.
- Philip, G. and Baird, D. (eds.) 2000. *Ceramic and Change in the Early Bronze Age of the Southern Levant* (Levantine Archaeology 2). Sheffield: Sheffield Academic Press.
- Rast, W.E. and Schaub, R.Th. 2003. *Bâb edh-Dhrâ': Excavations at the Town Site (1975-1981). Part 1: Text, Part 2: Plates and Appendices* (Reports of the Expedition to the Dead Sea Plain, Jordan, Volume II). Winona Lake, In.: Eisenbrauns.
- Sala, M. 2006. Pottery from the Batrawy IV Village. Pp. 103-108 in L. Nigro (ed.), *Khirbet al-Batrāwy. An Early Bronze Age Fortified Town in North-Central Jordan. Preliminary Report of the First Season of Excavations* (2005). (Rome «La Sapienza» Studies on the Archaeology of Palestine & Transjordan.), Rome: «La Sapienza» Expedition to Palestine & Jordan.
- 2010. Early Bronze II pottery productions at Tell es-Sultan. Pp. 253-272 in L. Nigro (ed.), *Tell es-Sultan/Jericho in the Early Bronze II (3000-2700 BC): the rise of an early Palestinian city. A synthesis of the results of four archaeological expeditions*, (Rome «La Sapienza» Studies on the Archaeology of Palestine & Transjordan, 5). Rome: Università degli Studi di Roma "La Sapienza".

- Tubb, J.N. 1988. Tell el-Sa'idiyeh: Preliminary Report on the first three seasons of renewed excavations. *Levant* 20: 23-88.
- 1989. Tell el-Sa'idiyeh. Pp. 521-542 in D. Homès-Frederiq and J.B. Hennessy (eds.), *Archaeology of Jordan. II. Field Reports* (Akkadica Supplementum VIII). Leuven: Peeters.
- 1998. *Canaanites* (People of the past). London: British Museum Press.
- Tufnell, O. 1958. *Lachish IV. The Bronze Age* (The Wellcome-Marston Archaeological Research Expedition to the Near East, vol. IV). London: Oxford University Press.
- Vieweger, D., Auge, W., and Hauptmann, A. 2009. Archaeometry in Archaeological Research 5000 Years of History on Tall Zar'a Pottery – Everyday Life, Trade and Technology in Northern Jordan. Pp. 245-258 in F. al-Khraysheh (ed.), *SHAJ X*. Amman: Department of Antiquities, Hashemite Kingdom of Jordan.